

**Get Your  
Medi-Cal  
Today**

# THE SYNAPSE

**U.C. MEDICAL CENTER**

Vol. 3

SAN FRANCISCO, NOV. 18, 1958

No. 5

**Dec. 9  
Next  
Deadline**

## SPOTLIGHT ON THE BIOMECHANICS LAB

The Biomechanics Laboratory was established on July 1, 1957, to provide an organizational framework within the University for the cooperation of faculty members in the interdisciplinary area of research known variously as biomechanics, bioengineering, or human engineering.

The Laboratory is currently functioning under the joint auspices of the Department of Orthopaedic Surgery, School of Medicine, and the College of Engineering, and is supported by Government research contracts and grants and donations from philanthropic organizations.

The Biomechanics Laboratory is an outgrowth of the Prosthetic Devices Research Project, initiated on the Berkeley Campus in 1945, and of the Biomechanics Group which met informally on the San Francisco Campus until 1953.

Since its organization on July 1, 1957, the Laboratory has devoted considerable time and effort to the establishment of research groups within its areas of interest and to the procurement of highly qualified personnel to round out the staff.

The policy making body of the Laboratory, known as the Biomechanics Research Board, is composed of a Chairman and Vice-Chairman, and coordinators in three areas: Administration, Engineering and Medicine. This group coordinates the research activities of various projects which are included in, or closely associated with, the Biomechanics Laboratory. As of the first of November, 1958, these projects included:

1. "Lower-Extremity Amputee Research Project" (Medical Division). Conducted under the supervision of the Department of Orthopaedic Surgery for the past two years, this project has received funds from the National Institutes of Health, U.S. Public Health Service. Dr. Verne T. In-

man, Chairman of the Department, is the principal investigator. Supporting funds have been approved for three additional years. The project includes extensive study of biological problems of lower-extremity amputees, with major emphasis in the fields of Dermatology, Energy Expenditure, Neuroanatomy, Neurophysiology, Pain, Psychology, Surgery, Skeletal Changes and Human Locomotion.

2. "Prosthetics Research" (Engineering Division) For the past twelve years this work has been conducted mainly on the Berkeley campus, with major emphasis on the engineering problems attendant on the design, development and improvement of lower-extremity prostheses. At the present time the emphasis is being transferred from above-knee to below-knee prostheses. In addition, the medical aspects of the problems are coming more into prominence and a closer association is being effected between the engineering and medical researchers. Valuable data have been obtained through this cooperative study, resulting in considerable improvement in prosthetic art. Dr. Verne T. Inman, Chairman of the Department of Orthopaedic Surgery, and Professor Howard D. Eberhart, Professor of Civil Engineering, are the principal investigators. Funds are supplied to the University by the Veterans Administration of the Federal Government.

3. "Biomechanics of Below-Knee Prostheses" Funds for support of this research project have been provided since January 1, 1958 by the Office of Vocational Rehabilitation, an agency of the U.S. Department of Health, Education, and Welfare. The purpose of the project is to study the fitting of prostheses to below-knee amputees as a problem in biomechanics. It includes detailed study of the effects on contact pressure by variations in socket shapes and



Simonne demonstrates some of the equipment used in the Energy Studies.

alignment, and the effects on locomotion. Dr. Verne T. Inman, Chairman of the Department of Orthopaedic Surgery, and Professor Charles W. Radcliffe, Associate Professor of Engineering Design, are the principal investigators.

4. "Emotional Aspects of Lower-Limb Amputation" Funds have been requested from the National Institutes of Health for the support of this expanded study, beyond the scope of the psychology studies being conducted with the Medical Division of other ampu-

tee research projects. These studies will be conducted under the supervision of Dr. Guy H. Crook, Associate Clinical Professor of Medical Psychology, and Dr. Henry F. Albronda, Assistant Professor of Psychiatry, and affiliated with the Biomechanics Laboratory.

5. "Spinal Cord Responses to Sensory Nerve Impulses" The aim of this project is to investigate mechanisms in the spinal cord that relay incoming sensory nerve impulses into the nerve pathways that ascend to the brain. Dr. Benjamin Libet, Associate Professor of Physiology, is the principal investigator of this project which is affiliated with the group of projects under the supervision of the Biomechanics Laboratory. The project is now in its third year, supported by funds supplied by the National Institutes of Health.

6. "Energy Expenditures and Work Tolerance Studies in Hemiplegic Patients" This project is in its second year, supported by a grant from the Office of Vocational Rehabilitation. Dr. Gregory Bard, Assistant Professor of Physical Medicine, Department of Orthopaedic Surgery, and Director of Rehabilitation, is the principal investigator. Dr. Henry J. Ralston is his chief associate in this work. This research project has been affiliated with the Biomechanics Laboratory because of the many similarities apparent in these studies and those of the Energy Group Amputee Research projects.

The purposes of this research project are first, to study energy cost in hemiplegic patients in doing common types of exercise, and second, to use such information in prescribing exercise programs and in prescribing assistive appliances.

7. "Pilot Study in Brace Research" This is the most recent addition to the group of major research projects of the Biomechanics Laboratory.

(Continued on Page 4)

## Biomechanics Conference To Be Held December 2-5

On Tuesday, Wednesday, Thursday and Friday, December 2, 3, 4, and 5, the Biomechanics Research Board will hold an Amputee Research Conference. The basic theme of the conference will be a review of medical and prosthetic progress and problems. The conference sessions will include discussions

on lower-extremity amputee and prosthetics research studies, which are of major concern to the scientific staff of the Biomechanics Laboratory, and also on airing of ideas on sensory feedback and control in externally-powered prostheses. The meeting will bring together many persons prominent in the Upper-Extremity Prosthetics Research Program, and in the field of bracing, which will also be discussed from several angles.

After the registration and preliminaries on Tuesday, the conferences will be devoted to presentation and discussion of medical aspects of the Amputee Research project being conducted here at the University of California Medical Center. These will include amputation surgery, neuroanatomy, neurophysiology and psychology. Dr. Verne T. Inman, chairman, Orthopaedic Surgery, will act as chairman of this conference.

The second day will have presentations during the first half of the morning, which will include the subjects of skin disorders of the amputee and studies in energy expenditure. The last half of the morning will include informal visits to the various technical laboratories of the Biomechanics Laboratory (Energy, Electronics,

Histology, and Neurophysiology, and to the Rehabilitation section of the Department of Physical Medicine).

The major portion of the afternoon session will be occupied with recent developments, present problems and plans in Biomechanics of Below-Knee Prosthetics, under the Chairmanship of Professor C. W. Radcliffe, College of Engineering, Berkeley campus. As in the preceding sessions, amputees will be used as demonstration subjects whenever practicable.

The Thursday morning period will be devoted to several presentations on the subject of Bracing. These will include a review of the purposes and results of the Research Institute on Bracing for Children, held in Richmond, Virginia, in December, 1957, discussion of recent developments and problems in bracing at various institutions. Professor Howard W. Eberhart, Professor of Civil Engineering, Berkeley campus, will act as Chairman. The afternoon of the third day will be occupied with a program concerned with upper-extremities, under the chairmanship of Mr. Edmond M. Wagner, of Los Angeles.

A review of upper-extremity re-

### B L Unique

"Biomechanics. What does that mean?" This question is invariably asked by any person not familiar with the research which is being conducted on the fourth floor of the old U.C. Hospital Building.

The Biomechanics Laboratory here at the University of California Medical Center is con-

(Continued on Page 4)

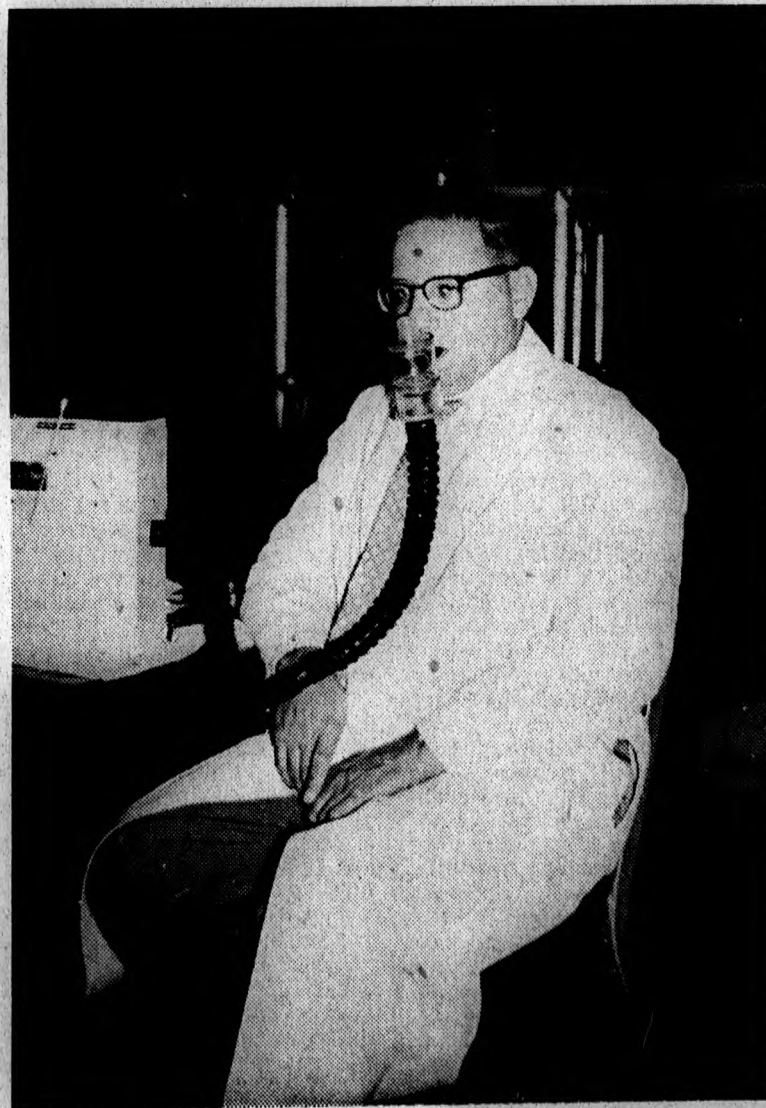
search and proposed future research will be presented, followed by several discussions on the subject of sensory feedback and control in externally powered prosthetics.

The fourth day will consist of meetings of the various subcommittees of the Committee on Prosthetic Research and Development.

Summary and discussion periods will be presented also, with members of the Biomechanics Laboratory scientific staff present to answer specific questions as requested.

The program which is to be presented should prove to be both stimulating and interesting. The speakers who will participate are considered to be outstanding authorities in their fields and consequently a most profitable conference is anticipated.

In addition to members of the Prosthetics Research Board of the National Academy of Sciences, officials of the National Institutes of Health, Veterans Administration, Office of Vocational Rehabilitation, the Children's Bureau, the National Society for Crippled Children and Adults, and various laboratories concerned with the development of prosthetic devices have been invited.



Use of breathing apparatus for energy expenditure is demonstrated by a member of the group.

# THE SYNAPSE

Room 249 Millberry Union  
U.C. Medical Center

San Francisco 22, California

MONTROSE 1-0210

Woody Geller, Editor

Ernie Rossi, Managing Editor

Jackie Roth, Secretary

Ted Nakata, Assoc. Editor, Dentistry Yasin Balbaky, Assoc. Editor, Medicine  
Lila Redlich, Assoc. Editor, Pharmacy Trixie McHarg, Assoc. Editor, Nursing

Posters and Cartoons, Medical Illustration, Marsh Turner and Bob Wong; Photographer, Ted Nakata; Reporters: Roger Kisner, Leo Tarantino, Roger Tennyson, Mae Takahashi, Linda Shore, Mickey Kanemaru, and Shannon Wong; Sports Editor, Hiro Miyahara.

Published biweekly during the academic year by the Associated Students, U.C. Medical Center. Subscription price \$2.00 per year by mail.

## EDITORIAL

### Student Government

Now that the semester is almost half over perhaps it is time to reflect on what is going on. By now each school, as well as each class, has had the election of their officers. These people are holding office to serve all of us and not for their own selfish reasons.

From time to time one can hear students complaining about this, that, and the other thing. Perhaps some new ruling was instituted in their school or some favorite procedure was eliminated. The students don't like it BUT, have they done anything to preclude this happening? NO! It seems that the loudest complainers are the most apathetic when it comes to doing something. Had they made their wishes known to their class officers perhaps this unwanted situation might not have come to pass.

It seems that a good majority of students regard a school as a large shell into which they enter in the morning and from which they emerge in the evening. This is not true. A school, as well as any other institution, is a vital thing and the experience gained can be interesting and wonderful or it can be drab, whichever we ourselves wish to make it. We here at the Med. Center will enter into one or another of the health fields upon graduation. Selfishness has no place in the health sciences for here we will be working as a team, a health team if you will. Is it not logical then, that the time and place to absorb this spirit of teamwork is NOW, while we are here learning our chosen professions?

There is no better way to get this feeling of cooperation and teamwork than to take part in our student government, if not actively at least supportively. We have here a government Of the Students, By the Students, and For the Students. Believe in it, support it, work for it, and it will work for you.

### Winning Exhibit

In December, 1957, an exhibit prepared by Dr. Verne T. Inman, Dr. Henry E. Loon, Dr. S. William Levy, and Dr. Gilbert H. Barnes, received the Clyde L. Cummer Gold Medal award from the American Academy of Dermatology and Syphilology at its annual meeting in Chicago for an

exhibit used in class instruction. This exhibit was comprised of color transparencies, drawings and texts to describe the skin disorders and other medical problems of leg amputees. The exhibit was shown in the lobby of the Medical Sciences Building during the month of January.

### Herzstein Lectures

"Brain and Behavior" was the general title of the 1958 Herzstein Lectures at the University of California Medical Center, San Francisco.

The three lectures were given Wednesday and Friday, Nov. 10 and 12, by Dr. Ralph W. Gerard, professor of neurophysiology at the University of Michigan Mental Health Research Institute. He is one of the country's leading students of the physiology of the brain and nervous system.

Wednesday night's lecture, entitled "Dynamics of the Nervous System", was at 8:15 p.m. in the auditorium of the Medical Sciences Building. The Wednesday evening lecture was entitled "Neural Metabolism and Function". The final lecture, Friday night, was on "Psycho-Pharmacology—the study of drugs affecting mental function."

Dr. Gerard, a past president of the American Physiological Society, has received numerous high professional honors and has contributed six books and some 300 research papers to scientific literature. His research interests have centered on metabolism and electrical activity in the nervous system. He is a foremost investi-

gator of the effects and mechanisms of mood-altering drugs.

The 58-year-old scientist received the B.S. and Ph.D. degrees from the University of Chicago in 1919 and 1921. In 1924, he received the M.D. degree from Rush Medical College. He served on the faculties of the University of South Dakota, the University of Chicago, and the University of Illinois before joining the staff of the Mental Health Research Institute at the University of Michigan in 1955.

The Herzstein Lectures were established in 1929 under an endowment from the late Dr. Morris Herzstein, a distinguished early San Francisco physician. They are given every two years, with sponsorship alternating between the University of California and Stanford University medical schools. They are always open to the public as well as to physicians and medical students.

## FROM THE DESK OF THE UNION DIRECTOR

Preparations for the gala Union dedication banquet last Thursday prevented me from meeting Editor Geller's deadline for the November 4 issue. Picking things up again at this time, I'd like to follow the established pattern and make some comments and observations on certain phases of the Union's operation. . . .

**Spouse Cards:** Based on the unanimous approval of the Board of Governors, an order for Spouse Cards has been placed with the University Press, and delivery is anticipated shortly. Any married member of the Union (student, faculty, or alumni) is eligible to pick up a card for his spouse, free of charge, entitling the spouse to use Union facilities on a pay-as-you-go basis. Such a card will permit spouses to use the Union whether their "mate" is with them or not. The new cards are non-transferable, and do not permit the bearer to bring in guests.

**Film Programs:** Perhaps you have noticed that the various films shown in the Union to date have all been on Saturday nights at 8:00 p.m. This night and hour were arbitrarily selected and are both subject to change upon request. Possibilities are almost limitless—Friday night, Sunday afternoon, Sunday night, a week night, a weekday afternoon—what's your pleasure? (Pending the arrival of additional motion picture equipment, watch for announcements concerning the first **cinemascope** feature in the Union.)

**Check Cashing Charges:** A complaint in connection with such charges has been received, based on the fact that local banks also make a per check charge. In this regard, two things should be kept in mind: (1) The Union makes no charge for checks cashed under \$25.00, and (2) the Union provides for the cashing of checks as a convenience, and the Central Desk cannot be thought of as a "branch bank." The small service charge which the Union places on checks in excess of \$25.00 is merely an attempt to partially offset the cost of clerical help and supplies involved in maintaining a check cashing operation.

### Essay Contest

## Pharmacy Students Can Win Cold Cash

HEY! Pharmacy Juniors and Seniors! Wanna win \$750? It's easy, no puzzles to fill out, no jingles to complete. Enter the Second Annual Pharmaceutical Economics Essay Contest. Sponsored by the J. B. Roerig Company, this contest awards a cash prize of \$250 to each of the top winners (one junior

and one senior) plus a grand prize of \$500 for the better of the two First Prize essays. How can you miss? Now's your opportunity to win—you're eligible if you are a junior or a senior Pharmacy student. Essays are to be on current problems in the field of pharmaceutical economics, and/or deal specifically with practical plans for enhancing the economic status of pharmacy. For example: How to improve profitability of professional departments, or Practical Methods for reducing operating expenses, or Controlling delivery expenses. Deadline date is March 1, 1959, so get started now! For advice, encouragement, and further information contact Dr. Walter Singer, Room S811.

HEY! Pharmacy Students! Here's your chance to win cash, money, m-o-n-e-y! Graduate students and undergrads—the Lunsford Richardson Pharmacy Awards for 1959 may be the answer to your problems. Cash awards of \$500 each will be made to the Undergraduate and to the Graduate Student in each of four regions in the United States for the best papers on their chosen subjects. Subjects for undergraduates include: (1) What I expect from the Pharmacy Internship program, or (2) Why I chose Pharmacy for my career, or (3)

**All-School Dances:** Preliminary plans for such dances, perhaps on a monthly basis, are now being formulated. To assist us in this regard, names of your favorite Bay Area musical groups and suggested dates would be extremely helpful.

**Tennis Courts:** One of our members modestly referring to himself as a "Tennis Star" placed a recommendation in the Suggestion Box urging "Build tennis courts somewhere." It should be pointed out that the construction of tennis courts (and bowling alleys) has always been in the thinking of the original Union Planning Committee, and the campus office of Architects and Engineers. The installation of these facilities is related to the big garage addition and is still under concentrated study. A report on the further development of this project can be expected in the near future.

**Table Tennis Room:** The placement of an exhibit of Indonesian Art in the Table Tennis Room seems to have disturbed some of our rabid table tennis players. At the present time we are experimenting with various areas of the Union which might be appropriate for table tennis when the room adjacent to the billiards area is in use for other events. While the Millberry Union is mammoth in some respects, we are severely limited in certain types of space, and it will be necessary in the future to use the Table Tennis Room from time to time for luncheons, meetings, art exhibits, etc. Placing one table outside of the Gymnasium doors did not prove satisfactory, because the linoleum floor became badly scuffed in rather short order. However, Bud Alexander has placed an order for some protective mats which can be used at those times when it is necessary to relocate the tables on a temporary basis.

The next meeting of the Union Board of Governors is set for Tuesday, November 18. If you are interested in getting any particular item on the agenda, please stop into our office, or contact your Union Board representative. Bob Alexander, Union Director

## Newman Club

The next regular meeting of the UCMC Newman Club will be held on Wednesday, November 19 at 8 p.m., at St. Anne's Parish Library, Funston and Judah Streets. The topic that will be discussed will be "The Catholic and the Bible." This lecture will be given by Father John F. Mattingly, S.S., Professor of Scripture at St. Patrick's Seminary, Menlo Park. Father Mattingly received his Doctorate in Sacred Scripture after completing studies in both Rome and the Holy Land. In his lecture, Father Mattingly will discuss the position of the Bible in Catholic theology, the interpretation of the Bible, the origin of the Bible and finally the Bible and the Word of God. All Catholic and non-Catholic students are welcome to attend.

On Sunday, November 23, Newman Club will hold an evening of recollection at the Convent of the Helpers of the Holy Souls, 204 Haight St. (corner of Haight and Laguna). The evening will begin with Holy Mass at 5 p.m. and conclude at 9:15 p.m. with Benediction. A dinner will be served following the Mass at approximately 6 p.m.

This evening of recollection will be conducted by Father Eugene Boyle, a noted lecturer at San Francisco College for Women. Reservations can be obtained by contacting either Vince Serveri-etti at EV 6-4088 or Irene Ayala at MO 4-3600, Ext. 1092.

The Newman Club PEC Meeting and Province Council Meetings were held on October 17 and 18 in Sacramento, California.

On Wednesday, December 3 at 8 p.m. in St. Anne's Parish Library an illustrated lecture will be given by Father John F. Lenahan, M.M., rector of Maryknoll Seminary, Mountain View. The title of the lecture is "Ambassadors for Christ." In his lecture, Father Lenahan will relate some of his personal experiences as a Maryknoll Missionary in Manchuria and Central America. A short film on missionary activity will be shown.

Remember November 23 for the Evening of Recollection!

### '59 Yearbook To Go on Sale

The 1959 yearbook—The Medi-Cal—will go on sale next week through the class representatives of each school.

To date, the following salesmen will be on hand to sell the yearbook to members of their respective classes: Bill Shapiro, second year Medical class; Kathy Mogan, third year Medical class; Carl Meyer, first year Pharmacy; Don Lee, second year Pharmacy; Lila Redlich, third year Pharmacy; Jean Kimura, first year nursing; Mary Haines second year nursing; Lou Ann Fukuda, third year nursing; Julie Wong, Freshman Dental; Judy Scott, first year Dental Hygiene; and Ray Cogo who will represent the Physical Therapists, Medical Technologists, X-ray Technicians, and Medical Illustrators.

The representatives for the Freshman and Junior Medical Class, fourth year Pharmacy, Sophomore, Junior, and Senior Dental students, and second year Dental Hygienists will be announced in a future issue of the paper.

By giving him your sales with in the next few days, you'll be spurring the edge of competition by helping the class rep. compete in being the one to sell the first twenty-five yearbooks and win a free Medi-Cal. Also there is a possibility of perhaps giving a class a bonus if every member purchases a book.

Watch for the latest news in subsequent Synapse issues as to the progress of the formative stages of the yearbook and to keep posted on what Joan Ruby, editor, has to say about little "specials" (such as graduating students' names imprinted on the front cover without extra dips into pocketbooks, perhaps) that may come your way.

## STADIUM GARAGE

SMITH and FALKENSTEIN

Wheel Aligning Brake Specialists Automotive Repair  
Automotive Transmission Specialists AAA Service  
522 Frederick St. San Francisco 17 OVERland 1-5800

# THE SENIOR ANGLE

By ROG TENNYSON

Why is it that the senior pictures are always taken two days before I get the haircut that I've been needing for the past three weeks? Now I can tell my grandchildren that that wasn't the Senior mascot, it was me . . . sometimes I think I really live right . . . last time I graduated (from high school, I think) the same thing happened . . . I remember that one . . . they took five proofs, and four were with my eyes shut. Well, in the immortal words of my colleague George Stephenson, "You can't win 'em all."

But from what I hear, things are tough all over . . . Morrie Corbett is exhibiting some dandy lumps of the head. It seems that at the last game over in Berkeley, he and "Man-mountain" Dal Porto spotted some of the other Dental students and to attract their attention, they tossed a few "articles" their way . . . SURE! The men's rooting section took it as a personal affront, and I hear that everything but Osky landed on or around Corbett, et al. Grem-lins, sacks, apples, cans of hooch, you name it. Most frightening I understand . . . he looks good in his senior pictures too . . . "No son, that's not a mummy in the picture . . . it's ME!"

The UCD Seniors are making their mark elsewhere too, I learn. Jack Hockel and his group of musicians are rumored to be going to represent the campus here at the Big Game rally over in Berkeley, come next weekend. Remembering those days, I suggest that Jack pack a beer-can proof crash helmet along with his sax . . .

And the Officer's Club at Treasure Island looked like an "old home week" last weekend; through the scotch-colored mist could be made out Gerry Geraldson and his wife, Ed Brautigam, Joe Hallekamp, Bob Bean, and their dates. All seemed to be enjoying the hospitality of the U.S. Navy to no end . . . what a way to end the fifth week of school . . . FIFTH WEEK! Where has the time gone, and if so, why hasn't there been more dentistry in my cash book? ? ? ?

## Nurses Notes

In addition to ward work, mid-terms, and the usual extracurricular activities which keep the student nurses busy, there are some important events coming up in the very near future.

The junior class (2nd year) are eagerly looking forward to Hump Day—the day which means they are exactly half of the way through. This day falls on November 22nd, but due to that being the weekend of the Big Game, they are celebrating on November 19th at Sigmund Stern Grove.

November 20th is the date for the next meeting of SNAC to be held at St. Luke's Hospital. The topic of discussion is Mental Health. All three classes should try to attend.

Both the 2nd and 3rd year students are anxiously awaiting November 25th—the date of the traditional Jr.-Sr. Banquet. The senior half will be the guests of the juniors who have been working hard to insure the success of

the banquet. According to the tradition, the menu and even the site remain secret (as far as the seniors are concerned, that is).

A little farther away but certainly no less important is the date set for the elections for NSB officers. December 12th is less than one month away.

(Let's have as good a turnout as California did for the recent gubernatorial election.)

The Nursing Student Body is sponsoring a Card Sale. The cards sell for \$1.50 and \$1.95 per box of 20 and would be ideal to send to friends and relatives. You might even send a box to your relatives as a present.

In brief retrospect—The seniors modeled some very stunning clothes at their fashion show. (To be used in connection with their extracurricular activities?) What did you think of the Nursniks? Bet you didn't realize North Beach was so close to Parnassus Heights.

1958 NOVEMBER 1958						
SUNDAY	MONDAY	TUESDAY	WEDNESDAY	THURSDAY	FRIDAY	SATURDAY
16	17	18 Millberry Union Board of Governors Meeting —Union	19	20	21 Union Movies: <b>BIG GAME WEEKEND</b> "Gate of Hell"	22 Football— Stanford- Berkeley
23	24 Saints, Sinners, Skeptics Meeting —Union	25	26	27 FALL RECESS Thanksgiving	28 FALL RECESS	29 FALL RECESS
1958 DECEMBER 1958						
SUNDAY	MONDAY	TUESDAY	WEDNESDAY	THURSDAY	FRIDAY	SATURDAY
	1	2 Noon Concert	3	4	5	6 Rho Chi Initiation Dinner—Union
7	8	9 Deadline #6 ASUCMC Council—Union	10	11	12 ASUCMC Christmas Dance	13 Biochemistry Dept. Christmas Party—Union
14	15	16 Saints, Sinners, Skeptics Meeting —Union Synapse #6 Noon Concert	17	18 Pharmacy School Christmas Party—Union	19	20

## Las Vegas Scene Of Student Meet

We hope the Tropicana Hotel in Las Vegas has recovered from the annual Convention of District Eight of the Student Branch of the American Pharmaceutical Association held there October 12-14. On hand to make the meetings (and the 'tween meetings) memorable were Tom Roberts, President of the branch of this organization at the Med. Center, and Gary McCown. Accompanying them were members of the faculty of the School of Pharmacy, Drs. Lee, Eiler, Preston and Schwartz. Highlighting the con-

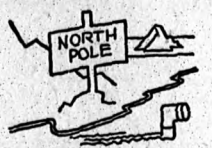
(Continued on Page 4)

For all your  
school needs

it's

THE GUY S. MILLBERRY  
STUDENT BOOK STORE

# Do You Think for Yourself? (THESE QUESTIONS WILL TELL YOU!\*)



1. Do you find going "off the beaten track" on a trip (A) interesting and constructive, or (B) merely inconvenient?

A ☐ B ☐



2. In a heated discussion would you rather (A) be the "moderator," or (B) jump in on a side using any argument to win?

A ☐ B ☐



3. Before making a complex decision, is your first move (A) to marshal the facts, or (B) to ask the advice of a respected friend?

A ☐ B ☐



4. Do you (A) try to figure out ahead what each day will bring, or (B) face problems as they come along?

A ☐ B ☐



5. When writing a letter applying for a job, would you try to make it (A) original and off-beat, or (B) factual and concise?

A ☐ B ☐



6. If you were getting furniture for a room, would you look first for (A) something comfortable, or (B) something colorful and unusual?

A ☐ B ☐



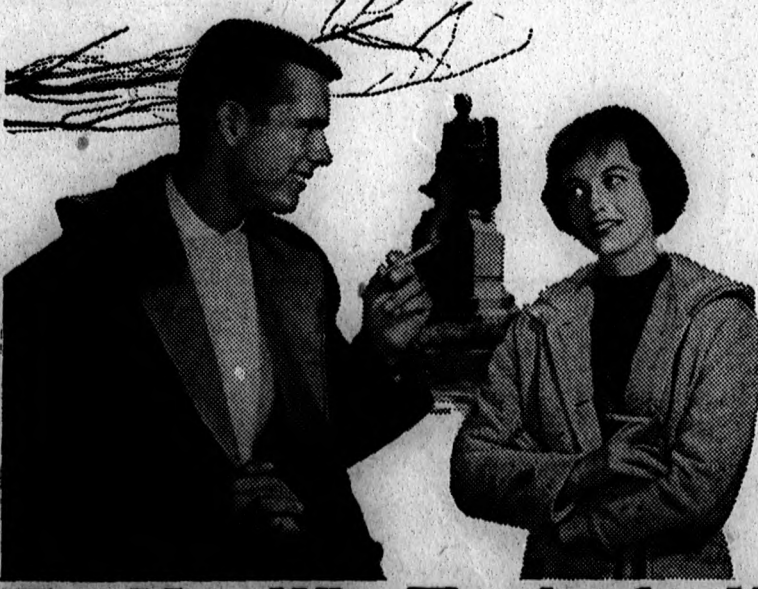
7. Would you prefer a job (A) in an old established firm offering security, or (B) a small company which could expand rapidly?

A ☐ B ☐



8. Would you rather be known as a person who (A) works well with others, or (B) accepts responsibility on his own?

A ☐ B ☐



9. When you step up to a cigarette counter, are you (A) confused by all the conflicting filter claims you've seen, or (B) sure of what you want because you've thought things through?

A ☐ B ☐

You will notice that men and women who think for themselves usually choose VICEROY. Why? Because they've thought it through—they know what they want in a filter cigarette. And VICEROY gives it to them: a thinking man's filter and a smoking man's taste.

\*If you have checked (A) on 3 out of the first 4 questions, and (B) on 4 out of the last 5... you think for yourself!

© 1958, Brown & Williamson Tobacco Corp.



Familiar pack or crush-proof box.

The Man Who Thinks for Himself Knows — ONLY VICEROY HAS A THINKING MAN'S FILTER... A SMOKING MAN'S TASTE!

★

SPORTS

★

# League Play Opens in Basketball Leagues

By HIRO MIYAHARA

**INDEPENDENT LEAGUE**

The first league game of the season between the Senior Meds. and Buildings and Grounds saw the Senior Meds. wining 50-34. The taller Senior Med. team controlled the boards for most of the game. Jerry Hayes, who got 20 points, and Tom Laughlin with 18 points, sparked the Senior Meds. offensive attack. Price of Buildings and Grounds scored 13 points, 10 of which came in the second half.

The Sophomore Meds. out-hustled the U.C. Hospital House Staff to beat them 31-25. Bob Wells turned in another sterling performance for the Soph Meds., scoring 13 points. The rebounding of Bruce Ames also helped the Meds. get their win. Jay Cox led House Staff scorers with 9 points.

The game between the L.D.S. and the Faculty turned out to be the closest game of the night. The Faculty led at half time 24-18. At the end of the third quarter L.D.S. had taken the lead 29-28. Harold Snow led the L.D.S. third quarter rally scoring 8 of his 16 points in that quarter. Dick Valentine scored 12 points for L.D.S. Bill Ware led Faculty scorers with 15 points while Bob Alexander scored 10.

After the first week of league games in the independent league, the Senior Meds., Sophomore Meds., and L.D.S. top the standings with one win, no loss records. The Freshmen Meds. drew a bye on the opening night of league play.

**FRATERNITY LEAGUE**

Nu Sigma Nu, playing heads up basketball all the way, beat Psi Omega 41-35. Tom Laughlin and Jerry Hayes, playing for their fraternity this time, scored 16 and 15 points respectively, ac-

counting for 31 of Nu Sigma Nu's 41 point total. Duke Lewis and Jim Wadnizak again led Psi O with 12 points each.

In a low scoring game between Kappa Psi and County Hospital, Kappa Psi won by a score of 27-20. Kappa Psi, getting off to a fast start, led at the end of the first quarter 10-4. County Hospital came back strongly in the second quarter to tie the score at half time, 10-10, and it wasn't until the fourth quarter when Kappa Psi could build up a substantial lead to finally win. Bob Wise scored 8 points and rebounded brilliantly for Kappa Psi. Rich Tarricco's team leadership, as well as his 7 points, was a big factor in getting the Kappa Psi win. Welton, rebounding well all through the game, scored 8 points for County Hospital.

The Zips, behind a tremendous scoring attack by Ron Marenda and Hap Stallman, beat the Phi Delt 61-36. Stallman scored 24 points while Marenda scored 20, 16 of which came in the second half. Piper led Phi Delt scorers with 13 points. Larry McConville, playing a fine floor game, scored 8 points. Gary Haase, one of the stellar performers of the Phi Delt team, suffered a knee injury in the opening minutes of the game, and this definitely hampered the Phi Delt attack.

After one week of league play, the fraternity league standings finds the Zips, Kappa Psi, and Nu Sigma Nu on top with one win, no loss records. Psi O, Phi Delt, and County Hospital have no wins, one loss records while General Services drew a bye on the opening night of league games.

## Spotlight on the Biomechanics Lab

(Continued from page 1)

chanics Laboratory. Because of the internationally recognized contributions of the University of California Amputee and Prosthetics Research groups to the health and welfare of the amputee, the National Society for Crippled Children and Adults requested the Biomechanics Research Board to undertake this study. Its primary objective is the development of a methodology for the conduct of research in improving braces for the lower extremities. The funds provided by the Easter Seal Research Foundation for the three year project represent the largest grant made by the Foundation since it was established in 1956. It is the first step of that group into the area of applied research.

Initially the work will be planned and conducted by Dr. Inman and Professors Eberhart and Radcliffe. Other faculty members of the School of Medicine and Department of Engineering will be added as the study progresses.

In addition to the seven major projects described above, several others are being conducted in the Biomechanics Laboratory by its scientific and technical staff personnel in collaboration with members of the Departments of Medicine, and Orthopaedic Surgery, and of the Veteran's Administration Hospital in Oakland.

## Next Union Film Show Announced

The next attraction of the Union Film Committee will be presented on Friday, November 21 at 8:00 p.m. in the Steninger Gymnasium. Movie-goers will recognize this as the first attempt to present a feature on Friday night. Headlining the program on the 21st will be one of the most colorful, interesting, and unusual foreign motion pictures ever filmed—"Gate to Hell." Produced in Japan in 1954, this feature was awarded 1st place at the Cannes Film Festival and was named by the United States as the outstanding foreign film of the year. Filmed in spectacular color and with English sub-titles, the movie portrays a stirring emotional drama based on a classic Japanese story.

Supporting the main feature will be a short subject titled "How to Take a Vacation" written and narrated by one of America's greatest humorists, Robert Benchley. Finally, and from the studios of U.P.A. will be another Magoo cartoon, "Hotsy Footsy."

Beginning in December, the Union Film Committee will present the first of a series of authentic cinemascope features.

**Campus Barber Shop**  
Monday thru Friday  
9-2 Saturday  
Millberry Union

# Fall Union Sports and Recreation Events

**VOLLEYBALL**

The men's and women's volleyball leagues will get under way on Tuesday night, Nov. 18. There are 4 men's and 10 women's teams entered. A league schedule had been drawn up and may be obtained at the athletic control desk.

**SQUASH TOURNAMENT**

Competition in the squash tournament has been set to begin on Monday, Nov. 24. Entries are now being taken at the athletic control desk with the entry deadline positively set for Friday, Nov. 21.

**TABLE TENNIS TOURNAMENT**

The table tennis tournament for men and women will begin on Monday, Nov. 24. Entries are now being taken at the athletic control desk. Entry deadline will be Nov. 21.

**TURKEY RUN**

The Turkey Run will be held each year just before Thanksgiving vacation. There will be two separate races for men and women. Each team will consist of two members. The race is an obstacle relay, the course and obstacles being decided upon and prepared by the Intramural Sports Director. The prizes are one turkey to each winning team in the men's and women's competition. The race will be run at noontime. Nov. 26, and will begin and end in front of the Millberry Union with the presentation of turkeys to take place there also. Entries are now being taken with the deadline being Tuesday, Nov. 25.

## Las Vegas Scene Of Student Meet

(Continued from page 3)

vention, Mr. Lou Fischl, President of the A Ph A, discussed the functions of the organization with the delegates. Other subjects covered during the official sessions included Prescription Pricing and Pharmacy Recruitment.

## BL Unique

(Continued from Page 1)

cerned primarily with the many and diverse problems of the amputee. Specifically—the below-knee amputee. The projects are not confined strictly to the San Francisco Campus, but extend to Berkeley and to the U.S. Naval Hospital in Oakland, where work is also being done.

This laboratory is the only one of its kind in the United States at the present time, and is unique in that it involves the integration of many varied subjects in the field of medicine and numerous other fields as well. The projects employ doctors and research workers in such fields as Surgery, Orthopaedic Surgery, both Civil and Mechanical Engineering, Dermatology, Physiology, Psychology, Psychiatry, Neuroanatomy, Neurophysiology, and Physical Medicine. One-half of the professional personnel working on this research are rendering their services to the projects with no salary for their work. These people represent some of the top men in their respective professions.

The chairman of the Biomechanics Research Board, Dr. Verne T. Inman, Chairman of the Department of Orthopaedic Surgery, is also the Principal Investigator in the Amputee Research.

This will be an interesting way to kick off the Thanksgiving vacation.

**DISTANCE SWIM**

It is still not too late for teams to enter the distance swim event. As of now, there are only two teams entered—the Sharks, managed by Jerry Hayes and the Sea Horses, managed by Bob Farrow. The first few days of competition found the Sharks leading 120 laps to 103 laps for the Sea Horses. Don Anderson swam 70 laps for the Sharks while Hayes contributed 50. For the Sea Horses, Reebe, Nancy Day and Ann Howard swam 48, 25, and 30 laps respectively. Competition will go on until a team swims 100 miles, or until Dec. 15, in which case the team having swum the longer distance will be declared the winner.

**SKI TRIPS**

Arrangements have been made by Bud Alexander for U.C. Medical Center students and faculty members to take ski trips to the A.S.U.C. ski lodge at Norden, California. The dates set for the trips are Feb. 14-15 and Feb. 28-29. These trips are open to beginning and intermediate, as well as advanced skiers. Reservations may also be made for group trips for any other weekends desired. There is also a possibility of forming a ski club here at the Medical Center. All those interested in either the trips or the ski club or both may contact Bud Alexander, Union Recreation Supervisor, for information.



**BUD ALEXANDER**  
Recreation Supervisor

## Suggestion Box

Bud Alexander and the rest of the recreation staff at the Union wish to thank you all for your excellent suggestions regarding things you wish to do and things you would like to see improved. Not all of the suggestions can be used, but the staff is doing everything in its power to give you as much as they can of what you want, as soon as they possibly can. Keep the suggestions coming in.

## CLASSIFIED ADS

**APPLICATIONS** are being accepted for the Men's Residences in Millberry Union. Maid service and linen provided, \$45.00. Further information may be obtained in the Women's lobby of Millberry Union.

\* \* \*

**TWO RIDERS** desiring to go to LA and back to SF for Thanksgiving contact Gene Pickens, LO 6-8603. Will leave Wed. p.m. and return Sunday. \$10.00 round trip.

\* \* \*

**RIDE WANTED** to Oakland—Lakeshore District, evenings, about 7 p.m. preferred. Daily or irregular schedule of both time and frequency OK. Mrs. Davis, Library, Ext. 255.

**Fifth Avenue Food Mart**  
400 Irving at 5th  
**FOODS - LIQUORS CHOICE MEATS**

**SPECIAL Recording Tape**  
Rock Bottom Prices  
Guaranteed Highest Quality  
30-15,000 CPS Hi-Fidelity  
1800 Ft.  
50% Longer Playing Time  
7-in. Reel **3.60**  
Mail Orders Add 25c for pp.  
Plus Sales Tax  
UN 3-5515  
**COLUMBIA MUSIC**  
1080 Market, San Francisco

**S. F.'s Finest**  
**3 Minute Car Wash**  
**So. Van Ness & 16th St.**  
Open 7 Days a Week

**ROGERS JEWELRY CO.**  
SALES AND SERVICE  
HAMILTON — GRUEN  
Carrying All Standard Brands  
DIAMONDS, WATCHES AND APPLIANCES  
Now Located at the Central Desk  
Millberry Union

**THE WISHING WELL**  
COCKTAIL LOUNGE  
Just a Whisper Off 7th Ave.  
603 Irving San Francisco

**Bradley CAMERAS**  
HE 1-7476  
1126 MARKET ST. • SAN FRANCISCO