

**Tea and
Sympathy
Sun. Nite**

THE SYNAPSE

U.C. MEDICAL CENTER

Vol. 4



SAN FRANCISCO, SEPT. 16, 1959

SEP 17 1959

San Francisco, 22

No. 1

**Support
Your
Union**

UNION ONE YEAR OLD

Les Brown and His "Band of Renown"

On Friday, Sept. 18th, the Union presents its birthday ball featuring the music of Les Brown and his "Band of Renown."

Les Brown's band is known all over the world through his years with Bob Hope on Radio and TV, his recordings on Decca, Columbia, Coral and now Capitol, and his personal appearance tours as well as his tours before armed forces units in Europe, Japan, Alaska, Korea, and many other far countries.

Les is a graduate of Ithaca Conservatory of Music, New York Military Academy, and Duke University. He was somewhat of a child prodigy. At the age of twelve he was playing the Rudy Wiedoft solos that were a part of every saxophonist's repertoire of that era. At sixteen he was featured soloist with Conway's concert band.

At Duke University Les played tenor sax with the Duke Blue Devils, his first two years at school. He became leader of this band his junior year, which, under his leadership became one of the best college bands ever known. In 1936 Les took the Blue Devil Band to Budd Lake, New Jersey, for the summer. Through this engagement the band recorded for Decca and made world transcriptions. After a year of travel, the band disbanded.

Les headed for New York, and as well as playing dates as a sideman, turned to arranging. He did both stock arrangements for publishers and "specials" for such leaders as Isham Jones, Red Nichols, Ruby Newman, and Jimmy Dorsey. In 1940 Les organized the "Band of Renown," which has moved steadily forward to number one. Les early adopted the policy of surrounding himself with the best possible sidemen, and paying the best possible salaries to keep these men together. This policy had paid off in a cohesive playing unit. There has been far less turnover in the personnel than is common in most such organizations.

The name Les Brown has become a symbol of good, danceable music throughout the continent. Time Magazine recently quoted him as saying: "We prefer sound to noise, we prefer the beat over effects, we prefer consonance to dissonance, and we like the melody if it's good." This seems to have been the formula of success of the Band of Renown and its personable leader, Les Brown.

Les Brown fans will also remember the widely acclaimed "Concert at the Palladium" album for Coral, which was recorded right on the stage of the famous Hollywood dancery, another first for the Renown leader. The period with Coral produced some other fine things including the "Musical Weather Vane," "Let's Dance," "Over the Rainbow" and other great albums. Les always gets requests for numbers from these albums and he is always happy to comply with them.

While we're on the subject of records, we can't avoid mentioning "Sentimental Journey." Recorded first by Doris Day on Columbia and later by Jo Ann Greer on Coral, "Journey" has become one of the all-time great standards of the music business. The associations with Decca, Columbia, Coral and now, Capitol, has made the Band of Renown one of the most widely recorded bands in the country.

All through the years Les Brown has appeared battling for first place in all the popularity

Ushering

There are ushering tickets available for all performances at the Opera House. The opera season is now in progress and will be followed by the symphony season. Sign-ups may be made at the Dean of Students Office, Room 238, UC Hospital Building, beginning September 21.



Les Brown

polls; however 1953-1954-1955-1956 and 1957 he won all major first-place honors. His first place in Downbeat and Metronome go on year after year.

This fact alone shows the importance of the Les Brown gift for organization and getting the best from everyone.

Freshman Orientation

An assembly for the purpose of acquainting all new students with the Medical Center will be held on Friday, Sept. 18 at 2:00 p.m. in the auditorium of the Medical Sciences Bldg. This meeting will include short talks by representatives of each of the four schools, followed by brief tours of the campus ending up at the Millberry Union where refreshments will be served. New students are urged to attend.

New Lockers Procedure

At the request of many of the Union members, starting with the fall semester, 1959, lockers may be checked out for either one or two semester periods. In the past members have only been able to check out lockers on a semester basis. We hope that this new procedure will be better. Lockers may be checked out at the Athletic Control Desk. They may be checked out from September to June for the fall and spring semesters. Rates are 50c per semester.



Les Brown Singers—Butch Stone and Susan Maro

Butch Stone

"Finding 'Butch' Stone was one of the greatest strokes of luck I've had in the band business," says leader Les Brown. In his sixteen years with the band, Henry "Butch" Stone has won a string of titles including comedian, vocalist, assistant leader, music librarian, gloom chaser, and now road manager. Butch has won friends the world over for his great entertaining feats as well as his smile.

His recorded renditions of "A Good Man Is Hard To Find," "Talk About A Party," "Priscilla," "If I Had The Money," and many others have made him one of the leading stylists of the past decade. He lives in Van Nuys, Calif., with his wife Shirley, his fourteen-year-old son Barry, and six-year-old daughter Pamela.

Barry, like his dad, is an ardent baseball fan and player. He pitches and plays center field for the North Hollywood team in the Babe Ruth League. It is not unusual to find a bunch of the guys in the band out at the games to watch Barry strike out ten or more batters or knock in a couple of runs with talented bat.

As if doing all the above things weren't enough, Butch doubles in

(Continued on Page 4)



Susan Maro

Les Brown has been a maker of stars throughout the history of "The Band of Renown." To the long list of great vocalists including Doris Day, Eileen Wilson, Lucy Ann Polk, and Jo Ann Greer, we would like to add the name of Susan Maro.

Susan has been chosen for the vocal spot with Les Brown for two reasons—she has an excellent voice and she is very attractive.

Singing has been her life for the past eight years ever since she discarded an art scholarship to enter and win the Cavalcade of Music contest in her home town Des Moines, Iowa. There were three thousand participants in this contest of which Susan was chosen best vocalist. Her prize was an engagement at the Oriental Theater in Chicago.

The Chicago engagement led to her own daily radio show over station KWOM Des Moines called "Songs by Sue."

After a long radio engagement she decided to gain more experience by singing with various dance bands touring the country.

In 1955 she came to Hollywood and immediately received a contract for a local TV show. Many options were exercised which

(Continued on Page 4)

JAZZ!

Saturday Night
Union Cafeteria
9-12 FREE!

UNION BIRTHDAY CELEBRATION 3 DAYS OF FUN

Friday—September 18

"Birthday Ball" Featuring Les Brown And His "Band Of Renown." 9:00 P.M. To 1:00 A.M. In The Steninger Gymnasium. Dress: Suits and Ties; Party Dresses. Tickets On Sale Now At The Union Central Desk. \$3.75 Per Couple, Couples Only.

Saturday—September 19

Dixieland Jazz Concert And Dance, Featuring "The Great Pacific Jazz Band." 9:00 P.M. To Midnight In The Main Cafeteria. Casual Dress. NO ADMISSION CHARGE.

Sunday—September 20

Family Dinner. 4:00 P.M. To 6:00 P.M. In The Main Cafeteria. \$1.50 Per Person. (Children Under 12, \$1.00) Call Extension 729 For Reservations. (Desired But Not Required)
Union Movie. "Tea and Sympathy" 7:30 P.M. In The Steninger Gymnasium. Admission—35c Per Person.

THE SYNAPSE

Room 249 Millberry Union
U.C. Medical Center
San Francisco 22, California

WOOLLY GELLER, Editor LOREN MENDEL, Managing Editor
LARRY MINKOFF, Bus. Mgr.

Photographer, Ted Nakata; Sports by Gordie Helmers & Bud Alexander;
Ted Nakata, Assoc. Ed., Dentistry; Hiro Miyahara, Assoc. Ed., Pharmacy;
Trixie McHarg, Assoc. Ed., Nursing.

EDITORIAL

Well, here it is September again with another summer gone down the drain. This brings us all that much closer to the fulfillment of our dreams and ambitions.

To you who are returning we say hello, welcome back. To you who are to be with us for the first time, welcome. May your stay here be an enjoyable and a fruitful one. You will find that you will be associated with one of the finest facilities of its type in the country. The training presented to you will be excellent but what you get out of it is up to you.

A year ago, we here at the medical center were blessed with a new Union, dedicated to the proposition that our academic life should be more pleasant. As with all newborn infants, the Union had some trouble in learning to walk. But now it can walk and is prepared to march forward with confidence. However, the Union needs your support. It is here for you and without you it cannot exist. Use it and enjoy it.

The Synapse is now in the process of reorganizing its staff. There are many things to be done in the publication of a newspaper. None of the jobs are so large as to interfere with your academic work. If you are interested in joining our staff (experienced or not) drop into see us in room 249, Millberry Union.

Material for the newspaper can be submitted to the Assoc. Editor of your school or, if you wish, may be brought directly to us.

A Message From The Pres. of ASUCMC

Inasmuch as this initial issue of The Synapse for the semester exists in major part as a means of welcoming and orienting those of you who are new to our campus, allow me to extend a sincere welcome as a representative of the Associated Students of the University of California Medical Center.

Due to the recent addition of our "pride and joy," in the form of the Student Union, this Medical Center is now in a better position



Glen Fortini

sition than at any time previously to function as a true meeting place for the several members of the "healing arts" team. This can and should be true in both an academic and social sense. Thus, the concept of a student body which is in fact "Associated" is possible on a campus with diverse, yet similar, pursuits. Such a cohesive force and attitude can only be to the ultimate benefit of

Big Weekend Parking

Parking is always a problem here on the Hill but during the weekend of the re-opening of the Millberry Union the situation may be even worse. Parking will be available on campus Friday from 5:00 p.m. on ... Saturday from 11:00 a.m. on ... and all day Sunday. Parking is also available in the garage every weekday from 7:00 a.m. to 10:00 p.m. The garage is closed weekends.



Ron Allsman

WELCOME PHARMACY STUDENTS

On behalf of the students of the University of California School of Pharmacy, I extend a warm welcome and congratulations upon your entrance to our midst. Each year the presidents of the various schools of this campus not only extend their welcome to entering students but attempt to offer advice and suggestions which might both ease the initial adjustment to this new way of life but also enrich and deepen the experiences for growth during your stay on this campus.

The suggestions which I have to make I'm sure have been said many times before, and since others have said them so many times I feel them worthy of repetition. You, as pharmacy students, are offered a great opportunity to prepare yourselves for a rewarding life as part of a great health team. Without a doubt the faculty that will instruct you is one of the finest in America. The opportunity for the interchange of ideas with these people comes only as a student, and the wise individual is the one who sees the value of participation in this opportunity.

However, another danger awaits you as students. That is the possibility of the engulfing nature of your daily academic life insofar as it may rob you of the opportunity of becoming a "whole" person who will be of real value to the community which he serves. The problems of a professional person are complex. They involve not only scientific problems but economic, social, political, and humanistic problems. The wise student is the one who sees his education in the light of the potential problems which confront him, and attempts to consider and establish the necessary background for the resolution of these problems.

Never get so involved with memorizing a certain piece of subject matter for a particular examination that you lose sight of your ideals. But on the other hand I urge you very strongly to pass your exams.

I won't tell you as your student body president that you should attend every student body meeting, every class party or every pharmacy convention, but I do recommend that you organize your time so that when you leave the University you will be capable of meeting the complexities of professionalism.

Ron Allsman, President, School of Pharmacy.

Noon Concert Series To Begin Sept. 29

The Medical Center Noon Concert Series, now a successfully established program, will inaugurate its 1959-1960 program on September 29 in the Music Room of the Millberry Union. The performing artist on this occasion will be Mrs. Xenia B. Lee, a graduate of the University of California. Mrs. Lee will be heard in a program of piano music by Beethoven, Bartok and the contemporary American composer, Walter Piston.

Noon concerts are held each Tuesday during the academic year at the noon hour. These programs have been very well received by students and personnel of the Medical Center campus in the past two years. Many outstanding local artists have appeared in these programs, including David del Tredici, Janet Goodman and Stephen Bishop, all three of whom have appeared with the San Francisco Symphony Orchestra.

The Noon Concert programs are planned by the Noon Concert Committee of ASUCMC. Any individuals on the campus who can offer their help to the committee will be welcomed. At this time,

WELCOME Medical Students

Class of '63: Welcome to the Medical Center, and to your medical school. These days signal for most of you the beginning of a long-awaited career in Medicine or its allied sciences. Arrival at this campus signifies the wonderful beginnings of your clinical studies.

Though of a respectable age as a campus, the Medical Center student organizations are relatively new in their present form. With matriculation you automatically become a member of two organizations, the Associated Students of the School of Medicine (the ASSM), and the Associated Students of the University of California Medical Center (the ASUCMC). The ASSM in particular is your student body organization; you are invited to all its meetings and will be informed of all its activities by your class officers. You are also a member of the larger organization, the ASUCMC, composed of students of all of the schools at the Medical Center. In addition to your participation in ASSM and in ASUCMC, you are invited to join the Student American Medical Association, which yearly is given increasing recognition nationally by medical organizations.

I hope the awe and excitement of your first days here become the steady impetus of the coming months, and that any bemusement is short-lived. We all of us, your colleagues in the Sophomore and Senior classes, urge you now to take all advantage of our vast experience for any help or information you feel we can give. Due to the rotation to the County Hospital for the third year's training, you may not become as well acquainted with the present Junior class. But we all have a common meeting-place in the new Student Union, whose leisure facilities are open to all the Center's students. Over and above such specific activities as swimming, squash, table tennis, and billiards, the Union gives you the essential place just to relax and talk, to meet students in the other four medically-related fields represented at the Center. Even now, still more opportunities and facilities are being planned and completed. For one example, the current reconstruction of U.C. Hospital will make available more teaching material; for another housing for married students, and larger parking areas.

You would not be surprised to be told that your instructors, so diverse in their range of knowledge and art, are at one in the desire to teach you. Still, you may need to be told, explicitly, of the access you always have to their learning and equally to



WELCOME Dental Students

Welcome, Class of 1963! We, the Dental Student Body, hope your years at the Medical Center will be as enjoyable and rewarding as ours have been. As your first year progresses you will probably find your experiences will vary from artistic exhilaration to mechanical frustration. Working with unfamiliar terminology and equipment, this first year at times becomes hectic to say the least, but never overwhelming. We are provided at this campus with a new, modern Student Union, where students may engage in numerous activities that are constantly in progress. You will find the Academic strain well relieved by active participation in the Student Union functions. The Union also affords you the opportunity to make many new friends in the other schools of the Medical Center.

The success of the Student Union activities and Dental School functions depends on you. Your academic studies, laboratory and clinic work are important, but endeavor to take part in social and fraternal benefits which are offered you. Get acquainted with your fellow students and enjoy and share the comradeship that exists in the professional field. Always feel free to ask the upperclassmen for advice or help, as many of the academic and personal problems, if not all of them, you may have, have been theirs in the past.

Again, the students of the Dental Student body welcome you and wish you the best of luck.

Bud Krebs,
ASB President,
School of Dentistry

their understanding counsel. Again, we are pleased that you have joined us. Good luck and success in these promising years.

Ann Lawrence
President, ASSM

THE GUY S. MILLBERRY

UNION BOOK & SUPPLY STORE

EXTENDS

"HEARTY GREETINGS AND WELCOME"

TO THE

STUDENTS AND FACULTY OF ALL SCHOOLS ON THE CAMPUS

COME IN AND GET ACQUAINTED

Raymond P. Ward, Mgr. and Staff

From The Desk Of The Union Director

It was almost exactly a year ago today that I had the occasion to prepare an article relating to the opening and dedication of the (then) brand new Guy S. Millberry Union. Curiously enough, and as we await the start of the 1959-60 academic year, my staff and I find ourselves possessed of the



R. A. Alexander
Union Director

Same amount of anxiety, anticipation, optimism—and nervousness. In comparing the original opening to the coming “re-opening” we feel that we are now equipped with a significant and valuable tool which was not at our reach twelve months ago, viz., a full year of operating experience. Advantageously, we now possess the answers to a great number of vital questions which confronted us in 1958.

Certainly it can be said that one of the necessary elements for perpetuating success is thorough (and frequent) evaluation. During the past three months, a great deal of time has been devoted to this process. Retrospectively, the 1958-59 year was a difficult one wherein we surely took as many “pratfalls” as any one-year-old. While we did miss our mark financially, I do feel that we formed a solid foundation for an extra-curricular activities program which will surely see a marked growth during the coming term. Calculated experimentation coupled with lessons learned only by hard knocks will surely alleviate, if not fully solve our peculiar financial problems. Regardless of where we may

"Great Pacific Jazz Band"

Jazz comes to the Union Cafeteria this Saturday night, September 19, from 9:00 p.m. to midnight. Music in this case is to be supplied by the talented and colorful “Great Pacific Jazz Band” under the leadership of Robin Wetterau.

Playing in the solid and traditional Dixieland manner, Wetterau's group has been organized and making appearances in the Bay Area for over two years. The organization consists of Charlie Sonnastine, first trumpet; Frank Goulette, second trumpet; Roy Gromi, clarinet; Sanford Newbauer, trombone; Tito Patri, banjo; Lee Valencia, banjo; Lloyd Byassee, drums; Dick Lammi, tuba; and Wetterau on piano. Although most of the musicians hold full-time, no-musical jobs, jazz aficionados will recognize the names of many of the Band members, from such famous groups as Turk Murphy's Jazz Band, the Bay City Jazz Band, the Dixieland Rhythm Kings, and The Strugglers.

As opposed to other groups, the Great Pacific Jazz Band concentrates not on rehashing the old standards, but on their own arrangements of classic yet obscure numbers, featuring a considerable amount of ensemble improvisation. The group further avoids conformity by heartily encouraging their audiences to dance while they play.

The Great Pacific Jazz Band is being sponsored by the Union Dance Committee. Dress is casual and there will be no admission charge.

“Gentlemen,” said the professor to his class, “this examination will be conducted on the Honor System. Please take seats these are your seats.”

stand a year hence, our entire staff shall continue to be primarily pledged to fulfilling the purpose of the Union as stated in Article II of its By-Laws: “To provide a campus center for the social, cultural, and recreational activities of the students; to foster closer personal friendships among the students; to encourage and cultivate a spirit of fraternal feeling between students, faculty, and alumni; to correlate the academic and the nonacademic activities of the students; to encourage students in development of leadership and skills through active participation in the Union that the students total training and experience may be well rounded and complete.”

Students returning to campus again this year will notice several changes completed or launched this past summer. The gymnasium floor has been completely refinished and the acquisition of a protective canvas covering will facilitate the continued use of the gym as a multi-purpose area. The first floor check room has been converted to offices for accounting personnel, a change that should result in the smoother, more effective administration of the Central Desk and its varied financial services such as check cashing, payment of housing rentals, etc. An area originally laid out as a beauty shop (but never operated as such) is being converted to serve as an annex to the Book and Supply Store. When completed, the new annex will offer a wide variety of sundry goods and supplies. A passageway has been made through the back wall of the ground floor fountain which will provide counter attendants with quick access to both the serving and preparation areas. Other minor changes have also been made or are in progress in other areas, all undertaken so that we may continue to offer Union members the broadest and most efficient array of services possible.

In the way of services, we would continue our standing appeal for your constructive criticisms at any time. To paraphrase the department store magnate Marshall Field, “My only enemies are those who are critical of what we do, yet fail to remind us of our shortcomings.”

Speaking on behalf of the Board of Governors, I would extend a special greeting and welcome to our new students. I sincerely hope that the Guy S. Millberry Union can play a part in enriching your experience as you begin the pursuit of your profession. To introduce you to the Union, we've planned a full and varied week-end of activities for your enjoyment. It will be the Les Brown Band on Friday night, the Great Pacific Jazz Band on Saturday, and a family dinner followed by a feature film program on Sunday night. It's your Union—make yourself at home!

"Family Dinner"

The Millberry Union Food Services Department will present the first of a series of “Special Sunday Dinners” beginning with a family dinner this coming Sunday, September 20, from 4:00 to 6:00 p.m. in the Main Cafeteria. Sunday's menu will feature spiced tomato juice, roast turkey with savory dressing, a choice of potatoes, molded cranberry salad, assorted relishes, chery tart, and a choice of beverage. The cost to adults will be only \$1.50 per plate, with children under 12 being served for \$1.00. Armand “Ted” Allegra, Union Food Services Director, is hopeful that many “Union families” will make these special Sunday dinners a regular habit.



Art Exhibits Announced

The Union Fine Arts Committee has announced its complete schedule of art exhibits for the first semester of the 1959-60 school year. Now on display is a set of twenty-six black and white photo panels showing some of the drawings and models of Leonardo da Vinci's inventions. This exhibit will be on display through the 6th of October. During the period October 1, 1959 through October 15, 1959, Hallmark Cards Incorporated will provide one of its annual “Hallmark Cards Art Award” series. Between November 2, 1959 and November 19, 1959, and through the courtesy of Encyclopaedia Britannica, Inc., the Fine Arts Committee will feature the “News Pictures Of The Year” traveling exhibit. Put together collectively by E.B., the University of Missouri School of Journalism, and the National Press Photographer's Association, this outstanding exhibit is the result of annual competition and is made up of approximately sixty, 16"x20" mounted photos.

Beginning on November 23 and concluding at the time of the Christmas recess, the Committee will sponsor the first annual campus-wide hobby show. It is anticipated that a wide variety of art work will be submitted for display by members of the campus family.

Completing the first semester schedule, and during the period January 4, 1960 through January 25, 1960, the works of Dr. Mardi Horowitz will be displayed. Dr. Horowitz is currently completing a residency at the Langley Porter Clinic.

In the immediate future, the Fine Arts Committee will begin to assemble the master exhibit schedule for the second semester. Union members having an interest in any particular type of exhibit should communicate their suggestions to the Office of the Union Director, Room 240.

WELCOME

Dental Hygienists

By Gail Louise Jacobs

Welcome, Dental Hygiene Freshmen! Welcome to one of the most complete medical centers in the United States. Our Medical Center is unique in that it combines residence halls, parking, cafeteria, student store as well as recreational facilities.

Your stay here will be busy! Your academic life will leave you time to enjoy and benefit from the various cultural and social opportunities the U.C.M.C. has to offer.

The senior class in Dental Hygiene is glad to have you here. We are looking forward to meeting and working with you, and hope that we can answer any questions you might have.

Best wishes for a very successful year!

Medical Illustrators Exhibit At Presidio

One of the most unusual art shows to appear on the Pacific Coast will open on September 16 when the Pacific Coast Society of Medical Illustrations and Photographers begin a four-day exhibit at Letterman Army Hospital, San Francisco. The exhibit, which promises to be the finest displays of brush, pen, and camera as an aid to medicine, will feature the work of medical artists and photographers from Stanford University School of Medicine, University of California Medical School, the Veterans Administration Hospital, Fort Miley, Mount Zion Hospital and Letterman Army Hospital, to name a few. Art and photography will be arranged by categories and will include among others, ent, pathology, urology, ophthalmology, ob-gyn thoracic, neurology, orthopedic, medical training aids, radiology and histology.

First exhibit of its kind on the Pacific Coast, the show will be housed in the Recreation Hall at Letterman Army Hospital and will be open September 16 through 19, inclusive, from 2:00 to 8:00 p.m. A short film produced by Johns-Hopkins University depicting the history of medical illustration from its inception to the present will be shown at the conclusion of each day's exhibit.

All physicians, dentists, nurses and allied science personnel are cordially invited.



ANN HOWARD

WELCOME

FRESHMAN NURSES

At last you're here! It may still seem a little unbelievable after your years of preprofessional schooling during which you waited and planned toward the day when you could enter nursing school. You will find your life here different in many respects. Now for the first time you will begin to apply in the hospital situation and to the patients what you are learning. You will spend a large portion of your training working closely with many people—patients, staff, faculty and fellow students.

As a campus our Medical Center is unique also. We share it with students who are enrolled in other professional schools related to the medical sciences. You will also find that the faculty members and employees join with us in many of our campus activities. At the heart of student activities is Millberry Union with its athletic program, student affairs, campus organization meetings and residences.

Yes, at last you're here! We, the members of the Nursing Student Body, have also been anticipating your arrival this fall. We are looking forward to meeting and working with you and hope we can answer any of your questions and help you become settled in your new home. Welcome—each of you—to our campus, our school, and our profession!

Ann Howard,
NSB President

MEMBERSHIP IN ASUCMC

Membership in the ASUCMC is offered to students for \$10.00, \$8.00 of which is sent to the ASUC Berkeley Campus, giving us the privilege to attend the various functions both athletic and social held by that organization. The remaining \$2.00 is retained by the ASUCMC, constituting the organization's main source of income.

Buy a card! Support your ASUCMC.

Now open for your convenience

The TERMINAL PHOTO STUDIO

Located in San Francisco's Downtown Airline Terminal

375 O'Farrell Street

A Step Away From The Passport Office

SPECIALIZING IN—

- Passport Photos
- Identification Photos
- Citizenship Photos
- Photostatic Copies

Why You Pay A Union Fee

As you know it was voted upon to maintain an obligatory fee of \$7.50 per semester per student or \$15.00 per school year, and this fee is a separate one and in no way related to any other existing "student body" fees. This fee is payable at the time of registration of each regular semester, and evidence of Union membership will appear on the reverse side of each student's blue academic registration card.

The following are some of the benefits received by the students for their \$7.50 investment:

1. Reduced price of food
2. Coat, book, and checking service
3. Spacious and attractive lounge areas
4. Meeting rooms and special equipment
5. Office and storage space for organizations
6. Information service, public address system
7. Minimal charge for rental of games equipment (i.e. billiards, table tennis, etc.)
8. Music room with the ultimate in Hi-Fi equipment
9. Free use of extensive athletic facilities
10. Easily accessible services such as the barber shop, book store, and cafeteria
11. A complete program of social activities, at nominal or no cost, such as:

- (a) Weekly film series
- (b) Dances
- (c) Dance instruction
- (d) Games, parties, tournaments, and lessons
- (e) Art exhibits and demonstrations
- (f) Coffee hours and discussion programs
- (g) Special children's programs

The activities offered during the big three day anniversary weekend are a sample of what the union membership fee entitles the student to. This fee is for operational costs only, since this union, unlike unions at many other universities, is paid for. Other individuals, such as faculty and alumni also pay a fee of \$15.00 per school year.



Music Room Features New Stereo Unit

Shown above are Miss Nancy Nicholson, Sophomore, Nursing, and Miss Caroline Swanson, Sophomore, Nursing, admiring the Union's new Ampex stereophonic equipment. Installed during this past summer, the unit is located in the Music Room and was donated to the Millberry Union by Miss Helen Myers in memory of her mother, Alice A. Myers.

The actual equipment consists of twin 15", 25 watt, Jim Lansing extended range speakers (in Slev speaker enclosures) finished to match the walls of the Music Room; and the main console unit which features a Garrard four-speed changer, diamond stylus, Pickering stereo cartridge, and bell stereo amplifier.

In view of the fact that the Music Room also contains a grand piano, and in order to

Union Council To Be Formed

In order that the Guy S. Millberry Union may better serve its members, a Union Program Council will be formed to help in the planning of activities. Six committees have been anticipated for the immediate future, covering various activities which would fall under their broad categories.

Games:

Bridge lessons, Games, Parties, Game Instructions.

Film:

Weekly Films, Camera Club, Special Film Activities.

Dances:

Special Dances, Dance Instruction, Mixer Dances.

Fine Arts:

Craft Activities, Record Renting Library, Jazz and Classical Music Programs.

Promotions:

Brochures, Union Newspaper, Special Publicity Workshops.

Hospitality:

Coffee Hours, Book Reviews, Debates.

The chairman of each of these six committees together with three separate officers will form the union program council. It is hoped that the chairman of this council will gain a seat on the Union Board of Governors. There will be sub-chairmen and committee members within each individual group, and it is hoped that these activities will provide extra-curricular opportunities for many students. Interested students may apply in Room 240, Millberry Union.

'Butch' Stone

(Continued From Page 1)

brass as road manager, which includes arranging hotel reservations, paying the boys in the band, trying to get them on a bus at eight o'clock in the morning, and a dozen other things.

At home when the band isn't working, Butch likes to make an occasional trip up to Las Vegas to visit his money. (So he says.) He also enjoys going out to see the ponies at Santa Anita and Hollywood Park, although he insists that none of his nags ever made it to the finish line standing up.

It would be hard to imagine the Band of Renown without Butch Stone.

Do You Think for Yourself?

(SHARPEN YOUR WITS ON THIS!)



If you saw a girl in a bathing suit on a ski slope, would you say, (A) "What—no skis?" or (B) "Cold?" or (C) "The pool closed three months ago," or (D) "Stay right here—I'll get the guard!"

A ☐ B ☐ C ☐ D ☐



Do you think the statement "It's always darkest before the dawn" is (A) an astronomical truism? (B) a good reason for getting home early? (C) a piece of hopeful philosophy? (D) an argument for night watchmen?

A ☐ B ☐ C ☐ D ☐



Do you think that a man who can pole-vault 16 feet but doesn't like to, should (A) go out and do it anyway? (B) keep the whole thing to himself? (C) do a bit of self-analysis on why he doesn't like to go so high? (D) have the bar set lower?

A ☐ B ☐ C ☐ D ☐



When you choose a filter cigarette, do you (A) ask all your friends, and take their word for what's best? (B) take the one that makes the loudest claim? (C) investigate the facts, then use your own judgment? (D) go for the filter that gives you taste plus filtering?

A ☐ B ☐ C ☐ D ☐

It's a wise smoker who depends on his own judgment, not opinions of others, in his choice of cigarettes. That is why men and women who think for themselves usually

smoke VICEROY. They know only VICEROY has a *thinking man's filter*—the filter with more research behind it than any other . . . the filter that changed America's smoking habits. And only VICEROY has a *smoking man's taste*.

**If you have checked (D) in three out of four questions, you're pretty sharp . . . but if you picked (C)—man, you think for yourself!*



The Man Who Thinks for Himself Knows—
ONLY VICEROY HAS A THINKING MAN'S FILTER . . . A SMOKING MAN'S TASTE!

©1959, Brown & Williamson Tobacco Corp

Dance Instruction Schedule

Modern Dance for Women
Tuesday and Thursday, 5:30-6:30.
Wednesday mornings, 11-12.
Ballroom Dance
Thursday nights, 7:30-8:30—Beginning; 8:30-9:30—Advanced.
Social Hour 9:30-10:30. Cost of the dance instruction will be 50c per lesson or \$5 per course. All dance instructions will start the week of September 28 and follow a 10-week schedule. Sign-ups will be taken at the Central Desk of the Millberry Union.

Buy Your Medi-Cal Now!

Newman Club's Activities

The 11th year of Newman Club activities will begin with the annual get acquainted party. The party will be held on the 7th floor of the 610 Dorm, on Wednesday evening, September 23rd, from 8-11 p.m. Included in the evening's fun will be entertainment, refreshments, dancing, and introductions of this year's new officers who are:

President: Vince Blake (Pharmacy).
Vice-President: Ellen Brown (Pharmacy).
Recording Secretary: Nickie Haumeder (Nursing).
Corresponding Secretary: Maxine Sam (Nursing).
Treasurer: Mark Westervelt (Medicine).

Later the same week, Sunday, September 27th, the Newman Club will hold its annual fall picnic. The picnic will be held at Mount St. Helena which is in the hills above Los Gatos. Plan to meet at 11 a.m. at Millberry Union. Rides will be provided from

Susan Maro

(Continued From Page 1)

kept her on the same show for more than six months. Offers for her singing talents began with Hollywood clubs, famous Palm Springs resorts and finally the plush Las Vegas hotels. Les is hoping for great things from this petite brunette beauty and will be introducing her to the Hollywood audience prior to his annual summer road trip beginning July 6.

there to the picnic. For those driving maps will be provided. The weather and area in the hills is perfect for a fall picnic. Included in the day's fun will be volleyball, basketball, football, and swimming. The cost is only \$1.25 per person. Of course there will be food and plenty of it. The first meeting of the fall semester will be held on Wednesday evening, October 7th, at 7:45 at St. Anne's Library, Funston (13th Ave.) and Judah. The lecture for the evening is entitled "Emotions in Free Choice." It will be given by Dr. George Brown.

Sports - Recreation

Hours of Operation Athletic and Recreation Wing

Athletic Control Desk—	
Monday - Thursday	11 A.M. - 10 P.M.
Friday	11 A.M. - 9 P.M.
Saturday	9 A.M. - 9 P.M.
Sunday	1 P.M. - 9 P.M.
The Swimming Pool—	
Monday - Friday	11 A.M. - 9 P.M.
Saturday	9 A.M. - 9 P.M.
Sunday	1 P.M. - 9 P.M.
The Athletic Facilities (gym, squash courts, exercise room)—	
Monday - Thursday	11 A.M. - 10 P.M.
Friday	11 A.M. - 9 P.M.
Saturday	9 A.M. - 9 P.M.
Sunday	1 P.M. - 5 P.M.

NOTE: The athletic facilities are reserved for Langley Porter neuro-psychiatric patients on Mondays and Fridays, 9:30 A.M.-11 A.M.

Recreational Swim Schedule

Members and Guests—	
Monday - Friday	11 A.M. - 9 P.M.
Saturday - Sunday	1 P.M. - 9 P.M.
U.C.M.C. Employees and Families—	
Monday - Friday evenings.....	5 P.M. - 9 P.M.
Rates—Members: No charge.	
Guests: 35c per person.	

Swim Team Schedules

Water Ballet
S.F. Surflins—First and third Thursday of each month, 6-7:30 p.m.

Note: The San Francisco Surflins is a private swim group composed of both U.C.M.C. student swimmers and other swimmers from the San Francisco area. This team has been together for several years and has made their name, "The Surflins," number one in both national and international water ballet swimming. The team is coached by Dr. Lolo Baer, who is a member of the Medical School faculty. Anyone desiring to become associated with this group should contact Dr. Baer direct.

Synchronized Swimming
Millberry Union "Marlins"—Second and fourth Thursday of each month, 6-7:30 p.m.

Note: The Millberry Union Marlins is a student and staff group which will be organized this fall under the instruction and coaching of Miss Anne Oelwein, a member of the Nursing School faculty. An attempt will be made to develop this group into a

popular entertaining synchronized swim team. It is desirous that those applying for admission to this group have some prior experience in the area of synchronized swimming. However, anyone interested may try out and are requested to do so by contacting the Recreation Supervisor.

Millberry Union, "Neptunes"—Thursdays, 4-5 p.m.

Note: The Millberry Union Neptunes is a newly organized group consisting of girls ages 6-12. These girls are products of the Millberry Union swim school. An attempt will be made to develop this group into a popular and entertaining synchronized swim team. The group will consist of children of students, faculty, and employees of the Medical Center campus. Selection for the Neptunes will be made on an invitational basis through the Millberry Union swim school program. Parents that have children with an interest in this type of activity should contact the Recreation Supervisor.

Fall Intramural Sports and Recreational Program

A bigger and better program of sports and recreation for the fall semester has been drawn-up by the Recreation Department. Concerning the use of the recreation facilities in the Millberry Union, Bud Alexander has this message for U.C. Medical students and faculty: "The excellent facilities for athletics and recreation provided by the Guy S. Millberry Union, combined with a very fine staff places the U.C. Medical Center in a unique and enviable position among all other Medical School campuses. The Recreation Department plans to offer a well-balanced program of intramural athletics and recreational activities. It is hoped that some phase of this program would appeal to the needs and interests of nearly every student and faculty member on campus."

Water Skiing Excursions

Three water skiing excursions are scheduled for this fall (September 26, October 3 and October 18). Boats and skis are furnished by the Recreation Department. Transportation will be by private auto. Costs are to be shared by the group. For information, contact Bud Alexander, Recreation Supervisor.

Gordon Helmers Heads Intramural Program Here

The Millberry Union Recreation Department is happy to announce that Gordon Helmers has been appointed Recreation Activities Assistant for the fall semester 1959. Gordon will supervise the men's intramural program. It will be his responsibility to organize the teams, draw up league schedules, appoint officials. He will also continue his responsibility to the children's swimming program. Gordon will also be connected with other special activities which will be organized throughout the fall semester. Bud Alexander, the Recreation Supervisor, is proud to have Gordon on his staff. He is very pleased with the work that he has done with the swim program and other special activities throughout the summer. You can rest assured that the program will be better than ever with Gordon on the staff.

Swimming Instruction Schedule

Swimming instruction for students, faculty members, employees and their families will be offered during the fall semester at the Union. All classes will begin the week of September 28. Classes will follow a ten-week schedule.

Registration is at the Athletic Control Desk September 14-26.

Classes will be limited. Sign-up will be handled on first-come, first-serve basis.

RATES—Members, \$2 per course. Non-members (children, employees, guests, etc.), \$4 per course.

Schedule

Beginning Swim Classes (non-swimmers) not able to swim across width of pool:

Children 6-9.....Sats. 9-10 a.m.
Children 10-14.....Sats. 10-11 a.m.
Adults 15+Mon. 6-7 p.m.

Children's classes will consist of 10 one-half hour lesson periods. Class will meet each Saturday morning on a regular schedule.

Adult classes are set up on a 10 one-hour lesson basis meeting once each week.

Intermediate Swim Classes (those able to swim 40 yards):

Children 6-9.....Sats. 11-12 a.m.
Children 10-14.....Sats. 2-3 p.m.
Adults 15+Wed. 6-7 p.m.

Children's classes will consist of 10 one-half hour lessons meeting once a week.

Adult classes will consist of 10 one-hour lessons meeting once a week.

Private lessons will be given in cases where it is not possible for individuals to take the regularly scheduled classes and according to the availability of instructors. Permission to take private lessons will be granted by the Recreation Supervisor. Persons desiring private lessons should contact him direct.

Advanced Swimming and Diving:

Children 6-9.....Sats. 1-2 p.m.
Children 10-14.....Tues. 6-7 p.m.
Adults 15+Tues. 7-8 p.m.

Classes will consist of 10 one-hour lessons.

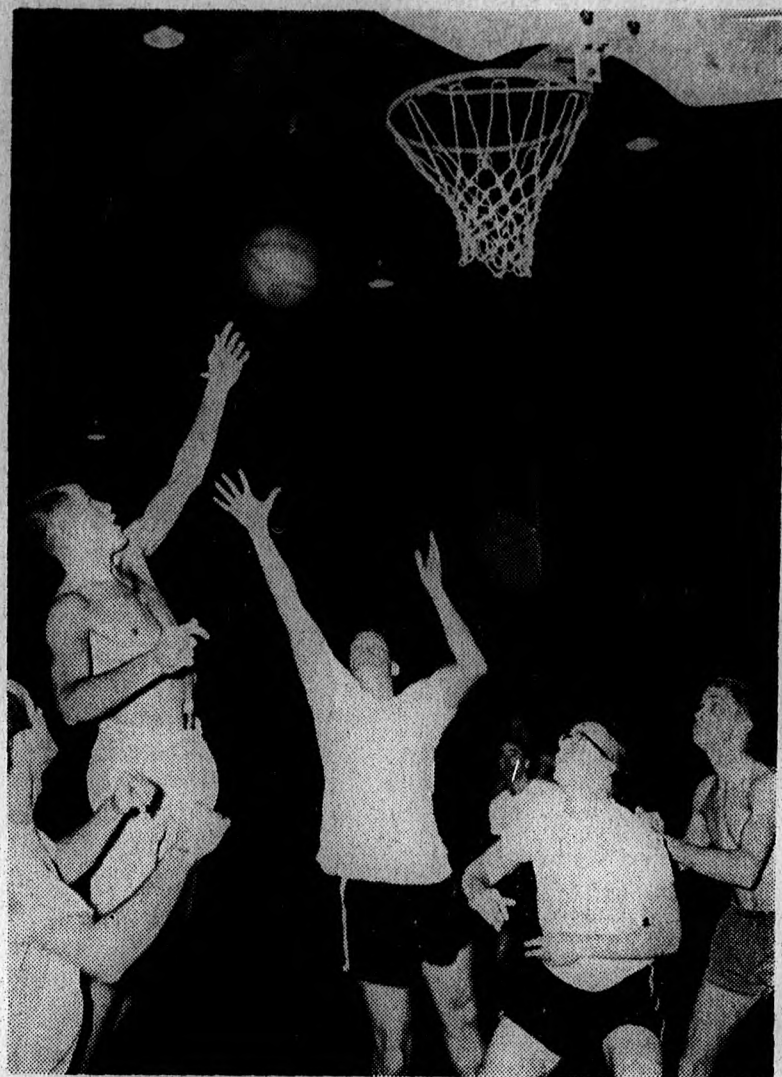
***Junior Life Saving** (ages 12-15)—Saturdays 3-4 p.m.

Junior Life Saving will consist of 15 one-hour lessons plus examinations.

***Senior Life Saving for adults 16+ up:** Monday and Wednesday 7-8 p.m.

Class will consist of a total of 20 hours of instruction, plus examinations.

*Note: In order to enroll for life saving instruction, one must be able to pass the Standard American Red Cross Swimmers' Test. Tests for eligibility will be given during the first meeting of each class.



BUD ALEXANDER

Special Events

Watch for the posting of these dates:

All-Campus Picnic
Cal Football Films
Big Game Excursion
Lick Observatory Excursion
Giants' Ball Games
Deep Sea Fishing
Camping Trip
Children's Party
Water Skiing
Ball and Chain Nights
Coffee Hour
Hi-Fi Concert
Beat Hour
Children's Christmas Party
Billiard Exhibition
Sports Car Rally
Stag Night
Ladies' Night
Bike Hike
Parents' Day
Photo Contest
Swim Show
Noon Concerts
Swim Meet
And Many Others.

ATTENTION: Bowling Enthusiasts

The Millberry Union is now forming a twelve-man bowling league to be held Tuesday nights, 8:30-10:30 p.m. at Park Bowl. Teams will be made up of two women and two men with two alternates. Basic instruction will be offered to non-bowlers. Hurry! Entry deadline is September 30. League starts October 6. Sign-up at the Athletic Control Desk.

Intramural Program Schedule

FALL 1959

Leagues

Men's Basketball—Independent League, which includes school, class, faculty, and employees. Entry deadline: September 30. Play starts: October 5, Monday night league.

Men's Basketball—Fraternity League, for organizations. Entry deadline: September 30. Play starts: October 7, Wednesday night league.

Men's Distance Swim—On school, faculty, and staff basis. Entry deadline: September 30. Play starts: October 1 and ends December 1.

Bowling League—Co-educational, Tuesday nights, Park Bowl: 8:30 p.m., set up on four man teams, two men and two women, with the option of having two alternates which will consist of one man and one woman. Entry deadline: September 30. Play starts: October 6.

Women's Volleyball—Open league on school, class, and staff basis, Tuesday night league. Entry deadline: October 7. Play starts: October 13.

Waterpolo—School, faculty, and staff basis. Thursday night league. Entry deadline: October 28. Play starts: November 5.

Two Man Volleyball—Thursday nights. Entry deadline: October 28. Play starts: November 5.

Tournaments

Billiards—(1) Snooker Ladder. Entry deadline: September 30. **Tournament:** Play starts October 1 and ends December 1. (2) Pocket Billiards. Ladder Tournament. Entry deadline: September 30. Play starts October 1 and ends December 1.

Squash Ladder—Entry deadline: September 30. **Tournament:** Play starts October 1 and competition ends December 1.

Table Tennis Ladder—Entry deadline: September 30. **Tournament:** Play starts October 1 and ends December 1.

Golf—U.C.M.C. Open. Entry deadline: October 21. Qualifying rounds to be held October 24. Matched play begins October 26. Competition ends November 15. **Bridge and Chess Clubs' Schedule**

Chess Club—Tuesday night, 7:30-10:30. Starts: October 6. Informal instructions and social games. Table tennis room, Millberry Union. Sign-up at Central Desk.

Bridge Club—Thursday nights, 7:30-10:30. Starts: October 8. Informal instruction and social games. Table tennis room, Millberry Union. Sign-up at Central Desk.

FOOTBALL TICKETS

Tickets are now available at the Central Desk for the Cal-Iowa game September 26. The deadline for the sale of these tickets will be Wednesday, September 23 at 5:00 p.m. All tickets will be sold on a first-come first-serve basis.

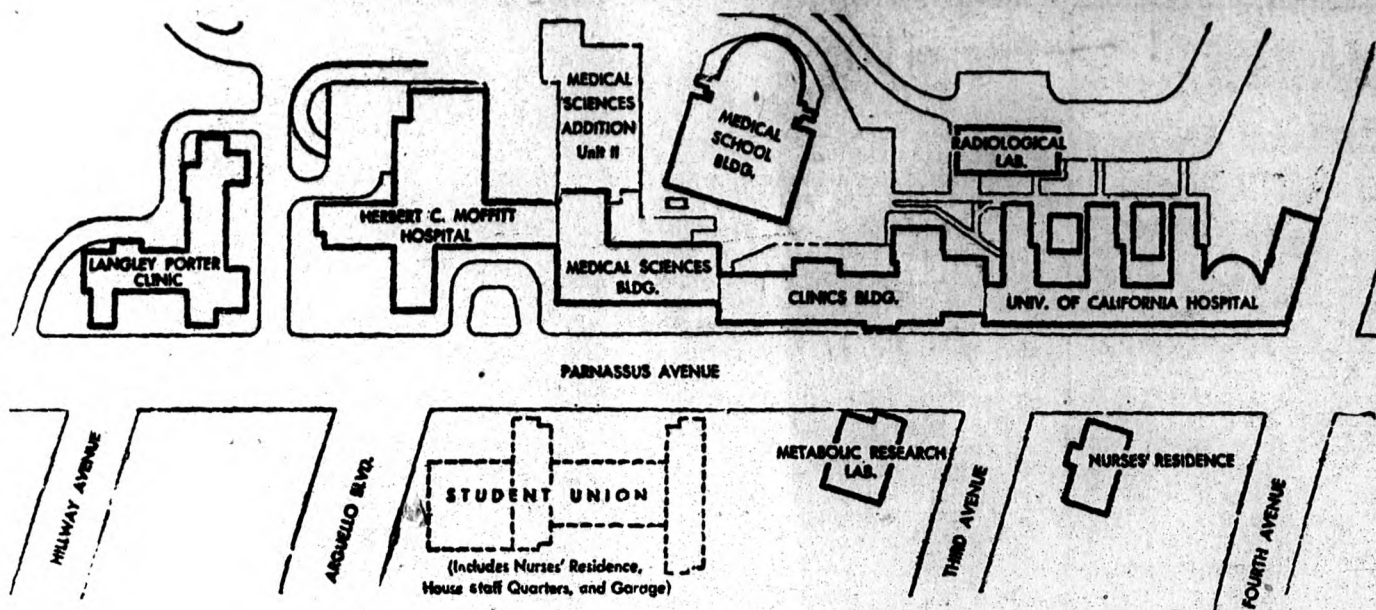
Student A.S.U.C. Athletic Privilege Card holders will have free admission. Associate A.S.U.C. Card holders may purchase two regular admission tickets at half price.

Spouse Tickets\$1.75
Regular Admission Tickets.....\$3.50

Huffer's Club

Sign-ups for the Millberry Union outdoor activities club, the "Huffer's," will be taken at the Athletic Control Desk. The Huffers Club is a combined organization of all those interested in outdoor activities such as camping, skiing, sports cars, horseback riding, picnics, water skiing, fishing, boating, bicycling, etc. Sign-ups are taken according to the activity. Whenever a particular activity is planned those people who have signed up for that activity will be notified. For further information inquire at the Athletic Control Desk or see Bud Alexander, Recreation Supervisor.

Introducing . . . The U.C. Medical Center



Herbert C. Moffitt Hospital

Floor

- 8 Central Supply, Physical Medicine, Occupational Therapy, Mail Room, Autopsy, Solution Manufacture and Housekeeping
- 1 Hospital Administrative Offices, Cashier, Admitting, Observation and Accounting
- 2 Kitchen, Cafeterias, Coffee Shop, Dietary
- 3 Radiology—Diag. and Therapy, Offices and Seminar, Nursing Serv. Offices
- 4 Operating Rooms, Recovery Rooms and Offices
- 5 Clinical Labs.—Hospital Pathology, EEG, Labs. and Blood Bank

Where to Find the Answers

Academic matters . . . Dean of respective school
Admission problems . . . Admissions Office, 62A UCH
Books and supplies . . . Student Store, Ground floor, Student Union

Dental service . . . Dean Batts, 238 UCH
Counseling . . . Information booth, 606 Med. Sci. Bldg.
Fees . . . Recorder's Office, 62B UCH
Housing . . . Dean of Students Office or Housing Supervisor, 238 Millberry Union
Intramural sports . . . Council representative
Jobs . . . Personnel Office (60 UCH) or Dean of Students (238 UCH)
Library . . . Ground, 2nd, and 3rd floors, Med. Sci. Bldg.
Loans and scholarships . . . Dean of Students, 238 UCH
Lost and Found . . . Sgt. Lopez, Grounds & Buildings, Annex
Medi-Cal . . . Editor, Sr. Nursing student—Publications office, 249 Student Union
Medical Service . . . Student Health Service, 120 Med. School

Offices—
School of Pharmacy, Dean . . . 947 Med. Sci. Bldg.
School of Medicine, Dean . . . 119 Med. Sci. Bldg.
School of Nursing, Dean . . . 207 Med. Sci. Bldg.
College of Dentistry, Dean . . . 630 Med. Sci. Bldg.
Physical Therapy . . . 01 Moffitt Hospital
Dental Hygiene . . . 741 Clinics Bldg.
Registration problems . . . Recorder's Office
Scholastic difficulties . . . Dean of respective school or faculty advisor
Scholarship Service . . . Dean of respective school
Student activities . . . Class representative to ASUCMC Council
School Chorus . . . Dr. Gordon Agnew, 634 Med. Sci. Bldg.
School Chorus . . . Dean of Students Office, 2nd fl. UCH
Synapse . . . 249 Student Union
Veterans affairs . . . Dean of Students Office, 2nd fl. UCH

HOUSING

The office of the Dean of Students, Room 238, U.C. Hospital, maintains a list of rooms (most of which have kitchen privileges), apartments and flats for the convenience of students.

In addition to the above, married students have found satisfactory living quarters in some of the housing projects owned and operated by the City and County of San Francisco, the most favored being the Sunnydale project in Visitation Valley and the Valencia Gardens project in the Mission district. These are low income housing units and are available to married students with children. To apply for this housing the following are needed:

1. Marriage Certificate.
2. Children's Birth Certificate.
3. Veterans: Discharge papers and G.I. entitlement statement.
4. Non-veterans: Proof of income student will be dependent upon throughout his schooling.

Application must be made in person at:

Housing Authority,
City and County of S.F.
440 Turk Street, S.F.

- 6 Pediatrics—Bed Area, Offices and Labs.
- 7 Neurosurgery, Neurology, Pediatrics—Bed Area Offices
- 8 Surgery (Ortho., Ophthal., Otorhin., General)—Bed Area, Offices and Labs.
- 9 Surgery (Urology and General)—Bed Area, Offices and Seminar
- 10 Medicine and Surgery—Bed Area, Offices and Labs.
- 11 Medicine—Bed Area, Offices, Seminars and Labs.

Medical Sciences Building Increment I

Floor

- B Medical Records, Tumor Registry and Biometry
- I Provost Office, School of Medicine Administrative Office and Medical Records

- 2 School of Nursing—Administrative Offices
- 3 Ophthalmology and Pathology—Offices and Labs.
- 4 Pathology and Microbiology—Offices and Labs.
- 5 College of Dentistry—Offices and Labs.
- 6 College of Dentistry—Administrative Offices and Labs.
- 7 College of Dentistry—Dental Clinics and Labs.
- 8 School of Pharmacy—Labs.
- 9 School of Pharmacy—Administrative Offices and Labs.
- 10 School of Pharmacy—Labs.
- 11 School of Pharmacy—Labs.
- 12 Cancer Research and Pharmacology
- 13 Dept. of Anatomy

Medical Sciences Building Increment II

Floor

- 1 Library
- 2 Library and Anatomy Embalming Room
- 3 Library and Radiology
- 4 Microbiology and Pathology
- 5 Pharmacognasy, Parasitology, Pathology, and Clinical Pathology
- 6 Parasitology and Oral Biology (College of Dentistry)
- 7 Physiology
- 8 Physiology
- 9 Physiology, Physiological Chemistry, and School of Pharmacy
- 10 Physiological Chemistry
- 11 Physiological Chemistry, Cancer Research Institute, and Pharmacology

- 12 Cancer Research Institute and Pharmacology
- 13 Anatomy
- 14 Anatomy
- Floors 3 to 14 inclusive—joint use animal tower.

Medical School Building

Floor

- 1 Clinical Path. Lab. Rm. 119, Student Health Service Rm. 120
- 2 Classrooms A, B, C, D
- 3 Cole Hall, Rm. 310

Clinics Building

Floor

- 6 Dental Clinics
- 7 Dental Clinics

Snack Bar

Between the Medical School Building and Medical Sciences Building.

U.C. Hospital Building

Floor

- B Admission Office Rm. 62A, Recorders' Office Rm. 62B, Personnel Office Rm. 60, Business Manager Rm. 64
- 1 Toland Hall
- 2 Dean of Students office
- 5 Classrooms E and F

Student Union Building

Floor

- B Garage
- G Pool, Cafeteria, Athletic Facilities
- 1 Lobby, Gymnasium, Music Room, Faculty Dining Room, Board Room, Central Desk
- 2 Publications Office, Student Activities, Office of the Union Director, Alumni Office, Living Quarters
- 4 Living Quarters

Union Film Program

The Union Film Committee takes great pride in announcing a new film program for the fall semester. The committee is one of the standing student activity groups of the Millberry Union. (Positions on this committee are now available, and interested parties may inquire in Room 240 of the union.) The committee's main purpose is to offer film as more than an entertainment medium, but as a distinct art form. Your comments concerning the total program are encouraged. Suggestion boxes are located in several areas of the building.

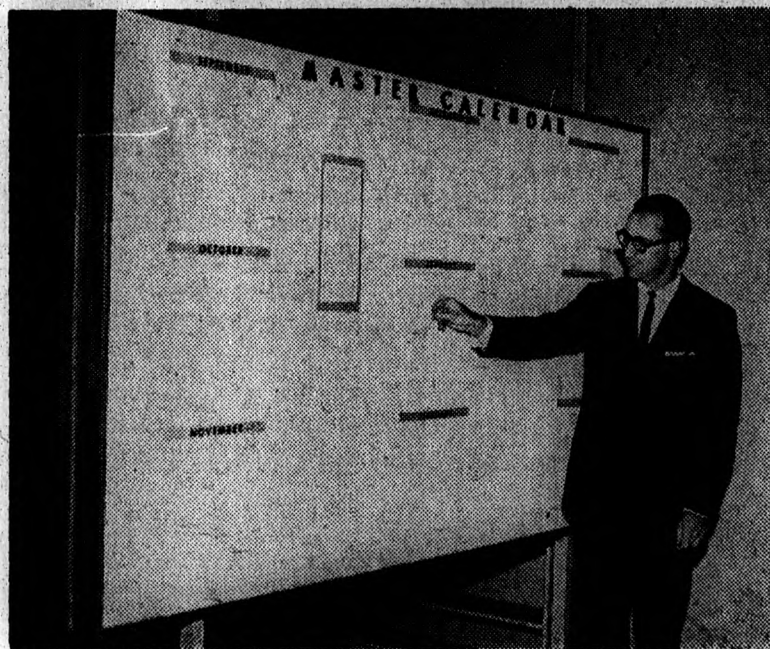
Among the changes to be expected are:

- A special section for smokers.
- An improved sound system.
- Change of showing from Fridays at 8:00 p.m. to Sundays at 7:30 p.m.

Following is a list of feature films to be shown this semester:

- Sunday, Sept. 20—"Tea and Sympathy."
- Sunday, Sept. 27—"Pather Panchali."
- Sunday, October 4—"The King and I."
- Sunday, Oct. 11—"The Red Shoes."
- Sunday, Oct. 18—"Charlie Chaplin Festival."
- Sunday, Oct. 25—"Rififi."
- Sunday, Nov. 1—"Teahouse of the August Moon."
- Sunday, November 8—"Ugetsu."
- Sunday, Nov. 15—"The Jolson Story."
- Sunday, Nov. 22—"Bicycle Thief."
- Sunday, Nov. 29—"Bus Stop."
- Sunday, Dec. 6—"Potemkin."
- Sunday, Dec. 13—"Picnic."
- Sunday, Jan. 3—"One Summer of Happiness."
- Sunday, Jan. 10—"Lust for Life."

All film programs will be presented in the George E. Steninger gymnasium on Sunday evenings and will begin promptly at 7:30 p.m. Individual admission price, 35c; season ticket price, \$4.25. Children under 12 will be admitted free.



MASTER CALENDAR

Pictured above is Mr. Glenn Fortini, student body president, shown with the new campus-wide Master Calendar located on the second floor of the Millberry Union. Established primarily to help solve some critical problems in the scheduling of various campus events, the calendar was constructed and installed this summer.

Not intended to be all-inclusive, the new calendar attempts to list all of the events Union scheduling personnel are able to learn about which are of general interest to the campus family. Listings are recorded whether the event takes place in the Union or not.

Calendar entries will be made by Miss Glenda Jones, Secretary to the Union Director. Based on all events recorded, a weekly mimeographed calendar supplement will be prepared for distribution to any individual or group requesting a copy.

The effectiveness of this type of calendar depends almost entirely on the cooperation and perpetual cooperation of all of those individuals or groups responsible for "booking" campus events and activities. This responsibility can best be filled in two ways: 1) Checking the calendar for possible conflicts BEFORE your specific date is selected, and 2) notifying the Director's Secretary of the selected date so that the event may be properly recorded on the calendar.

Assuming the cooperation of all involved, listing an event on the Master Calendar should also be a highly effective form of publicity. We hope YOU get the "Master Calendar habit" soon. (Questions relating to scheduling and calendar procedures can be directed to Miss Glenda Jones, Extension 721.)

Where To Eat

The food service department in the Millberry Union operates a cafeteria and fountain which are open during the following hours for your convenience:

CAMPUS CANTEEN

7:00 a.m. to 4:30 p.m., Monday through Friday. Closed on week-ends.

FACULTY CLUB

Open for luncheon only, Monday through Friday, 11:15 a.m. to 1:30 p.m. Closed on week-ends.

MAIN CAFETERIA

Monday through Friday:
Luncheon—11:15 a.m. to 1:30 p.m.
Dinner—5:00 p.m. to 7:00 p.m.
Saturday:
Closed.
Sunday:
Special dinners—4:00 p.m. to 6:00 p.m.

FOUNTAIN

Monday through Thursday:
7:00 a.m. to 10:45 p.m., continuous service.
Friday:
7:00 a.m. to 10:00 p.m., continuous service.
Saturday:
9:00 a.m. to 9:45 p.m., continuous service.
Sunday:
10:00 a.m. to 3:00 p.m., continuous service.

In addition the dietary department of Moffitt Hospital operates two cafeterias located on the second floor of Moffitt. The San Francisco Room is open from 6:30 a.m. to 2:00 p.m. weekdays and until 7:00 p.m. weekends. The Golden Gate Room is open 11:30 a.m. to 7:00 p.m. weekdays only.

Help Wanted . . .

- Light work, no pay. Lots of satisfaction.
- Sports Editor.
- Gossip Columnist.
- Advertising Manager.
- Circulation Manager.
- Proof Readers.
- Layout.

If interested, contact The Synapse, Room 249, Millberry Union, MO 1-1444.

TEA & SYMPATHY
SEPTEMBER 20th
STEM ? GYMNASIUM
Steninger Gymnasium