

# SYNAPSE

Published as a student activity by the Guy S. Millberry Union.

Vol. 9, No. 1 University of California — San Francisco Medical Center Thurs., Sept. 17, 1964



The count-down on ASUC's Orientation Program for entering Freshmen was begun this week as Chancellor Saunders, who will be host for his traditional reception for new students on Friday at 3:30 p.m. at Millberry Union, discussed final plans with ASUC officers. Left to right: Tony Sebastian, Medicine; Pat Prescott, Nursing; Mel Matsushima, ASUC Prexy and SYNAPSE Editor; Chancellor Saunders; Tom Piepmeyer, Pharmacy; Rich Avanzino, MEDI-CAL Editor; Dr. Ernest Newbrun, Graduate Students' Association, and Gary Steyaert, Dentistry. (More pictures on p. 3.)

## KQED'S Cap Weinberger to Moderate

## Fair Housing Crisis Moves In For Millberry Debate Oct. 29

Proposition 14—the California Real Estate Initiative against the Rumford Fair Housing Act—will be subjected to an hour-long debate at Millberry Union on October 29, the eve of the election in which it is a legislative crisis.

KQED Program Director

Cap Weinberger will moderate the discussion in which Prof. Richard R. B. Powell, former Dwight Professor of Law at Columbia University and presently Law Professor at Hastings, and one of the country's foremost property law experts, will take the rebuttal argument to the statement to be made by Dan Klein of the San Francisco Real Estate Board, representing the "yes on 14" viewpoint.

The program, fourth in Millberry's fall semester "Meridian West" series, will open the agenda of the newly-formed Union Public Affairs Committee. The group, formed early in the spring semester 1964, consists of interested students with Dr. Laurel Glass and Dr. Louis Strait as faculty advisors and Robert Alexander and Elizabeth Coffelt as Program Advisors. Members will also sponsor and implement a series of programs developed to present filmstrips from the New York Times series on current affairs.

THE SYNAPSE, in order to represent the opposing viewpoints on Proposition 14 more thoroughly than the hour program would allow, intends to print statements by Professor

Powell and Mr. Klein in several installments prior to October 29. Students wishing to present questions either to THE SYNAPSE or to the debate participants are asked to bring the questions in writing to the Publications office, room 241, Millberry Union.

## Coming Events

9 17—Registration  
Millberry Union  
9 17—ASUC Orientation  
7:30: Med. Sci. Aud.  
9 18—Cal Club Program  
2 p.m. Med. Sci. Aud.  
9 18—Chancellor's Reception  
3:30—Millberry  
9 18—9 p.m. Frosh Dance  
Millberry Union  
9 19—Cal-Missouri Game  
Berkeley Campus  
9 20—House Staff Reception  
Dept. of Medicine  
9 21—First Day of Classes  
9 21—Presentation Program,  
Regents' Scholarships  
9 21—Nursing Capping Ceremony  
9 23—Noon Topics Lecture  
Med. Sci. Aud.  
9 25—Sports Film, Noon  
Millberry Lounge

9 25—Radiology Reception  
Millberry  
9 25—Union Film Series  
"David and Lisa"  
9 25—BANJO BAND PARTY  
9 p.m. Millberry  
9 26—Football, Berkeley  
Cal-Hillinois  
9 26—Medical Students'  
Wives Tea, Millberry  
Union  
9 26—Deep Sea Fishing Trip  
Union Rec. Dept.  
9 26—Little Bear Film  
Millberry Union  
9 27—Dental Students' Wives  
Tea  
9 28—Graduate Nurses' Faculty  
Council Reception  
Millberry  
9 30—Freshman Medical Students'  
Reception and  
Dinner: Millberry

## Orientation Schedule

THURSDAY, Sept. 17, 7:30 p.m.:

ASUCMC Program, "Introduction to the 'Health Team'" Medical Sciences Auditorium

FRIDAY, Sept. 18, 2 p.m.:

Cal Club Program: Introduction of Administrative Officers, Medical Sciences Auditorium

FRIDAY, Sept. 18, 3:30 p.m.: CHANCELLOR'S RECEPTION, Steninger Gymnasium, Millberry Union

FRIDAY, Sept. 18, 9 p.m.-12 p.m.

FRESHMAN DANCE

All students attending the formal Orientation programs on Friday afternoon, September 18, will find identification badges color coded for easier location of different School Representatives. The colors are as follows: Blue, Nursing; Red, Medicine; Gold, Pharmacy; Lavender, Dentistry; and White, Campus Officers and Officials. All questions in reference to different fields should be directed to the individual wearing that specifically colored badge.

## Top Campus Clubs, Officials, Unite to Greet Freshmen

By MEL MATSUSHIMA

Entering freshmen on the "Health Team" will be initiated to Medical Center campus life and philosophy by a squad from the varsity—upperclassmen—for the first time this year as ASUCMC and Cal Club's Orientation programs open the academic year.

Hoping for greater unity and closer organization among the schools, representatives from Medicine, Dentistry, Pharmacy and Nursing, as well as graduate schools and other curricula, will work together through the ASUCMC (Associated Students of the University of California Medical Center) to welcome the neophyte professionals and acquaint them with campus life.

Highlighting the two-day session will be the traditional Chancellor's Reception at Millberry Union, when Chancellor and Mrs. J. B. de C. M. Saunders and other distinguished campus officials and their wives, greet the new students at 3:30 p.m. on Friday in the Steninger Gymnasium.

Starting the new Freshmer off on the orientation schedule will be the ASUCMC Orientation program entitled "An Introduction to the Health Team" Thursday, September 17, at 7:30 p.m. in the Medical Sciences Auditorium. The initiates to campus will be given a general idea of the function of his school or profession as an integral part of the "Health Team" and will learn how, with the cooperation of the different branches of the team, the patient can best be served and treated.

Pat Prescott, Chairman of the ASUC program, told THE SYNAPSE that the program will be initiated by introductions of distinguished guests, followed by a panel discussion of the purpose and practice of the "Health Team" in a clinical case. Representatives on the panel are: Tony Sebastian, Medicine; Jerry Nelson, Dentistry; Sue Herney, Dental Hygiene; Pat Prescott, Nursing; and Tom Piepmeyer, Pharmacy. Medicine will be the hub of the team, radiating the care of the patient to other members who can best fulfill the patient's needs.

To further solidify the ideas expressed in the panel, twenty separate discussion groups, with representatives from each branch, will continue the discussion of specific inter-relationships between team members.

On Friday afternoon at 2 (Continued on Page 3)

## Banjo Band to Blast Off Sept. 25

The Banjo Band Party—traditional student stomp to be given its fifth annual seal of approval this year by hundreds of students—will be held on Friday, Sept. 25, from 9-12 in the Steninger Gymnasium.

Tickets went on sale Sept. 9 at the Central desk for the evening's entertainment and refreshments. Sales (at \$1.75 per person) will continue until the night of the party. Students must present UC Medical Center Registration cards for admittance.

The seven-piece Banjo Band will play continuously for listening and (extemporaneous) stomping.

## IN THIS ISSUE

	Page
Orientation Program	1, 3
Editorial	2
Dean's Message	2
Arts and Entertainment	4, 5
Recreation News	6, 7
Campus Map	
Classified Section	



# SYNAPSE

U. C. MEDICAL CENTER — SAN FRANCISCO

San Francisco 22, California

MOntrose 4-3600 Ext. 721

Published as a Student Activity by the Guy S. Millberry Union. Staff Advisor and Managing Editor: Elizabeth Coffelt

Editor: Mel Matsushima

Editorial Board: Bob Reinhardt, Bruce Orsborn, Bob Schindler, Ron Converse, Jim Lindauer, Roger Lang, Marva Olsen, Niki LaSalvia, Martin Blinder, Bill Brostoff, Myron Lee, Carl Schultz.

Published bi-weekly during the academic year. Subscriptions \$2.00 per semester.

## Six Down

To clear up any confusion, it should be pointed out that the Guy S. Millberry Union, having opened its doors in September of 1958, is beginning its seventh year of operations and service to the campus. Throughout last year (our sixth) attention was called in various ways to the fact that the building and its program reached the five year mark in September of '63. Birthdays are of little consequence, however, in comparison to the growth and development of the offspring in question.

Each of our six years has been a "building year" and each year has had a characteristic dimension of its own. Such was the case in 1963-64, and such will undoubtedly be the case in 1964-65. What was so distinct and special about last year? To begin with, and in financial terms, the year began in rather alarming fashion, i.e., after the July 1 starting date, we were advised that our payroll costs would increase some eight to ten percent as a result of a (Statewide) University ruling pertaining to the payment of certain employee benefit costs. Despite these unanticipated and substantial costs (ultimately totaling \$21,000.00), and for the third consecutive year, the Union finished "in the black" as it has done in four of the six years of its existence. (Noteworthy here is the fact that had it not been for the new and added expenses, last year would have been the very first year that the Union's low-cost student food program would have returned a profit. Still, the 4 percent loss for the year was less than in the previous year.)

What happened to the Union program last year? With five years of trial (and some error) behind it; with the help of a full-time creative and enthusiastic Program Coordinator to guide it, and aided by a cooperative and receptive student body led by a dedicated A.S.U.C.M.C. President, the program reflected certain positive changes in direction and reached new-fledged heights. What were the highlights? A return to a quality and journalistically professional campus newspaper, easily capable of rivaling other collegiate publications. A vastly modified, improved and engrossing yearbook that set a new standard (and sales record) for the Medical Center. A gay, entertaining and educational arts festival (the first May Fair) that did indeed seem to transmogrify the Union — if not the entire Campus. A succession of films, exhibits and noon concerts that experimented with the use of controversy as a program element and that collectively manifested a variety of fresh and unusual (to the campus, at least) art forms. In the athletic and recreation areas, and led by Bud (no kin) Alexander and his (student) Recreational Activities Committee, a replete and appealing calendar of events was offered, ranging from intramural sports to intercollegiate basketball, and augmented by a variety of special films and excursions.

What's ahead this year? If the program is to be given a "trademark," perhaps Creativity would be the most appropriate. During '64-65, the Union members will find a variety of opportunities to change from spectator to participant. Specifically, and for the first time, low-fee instructional programs will be offered in folk guitar and in the arts media. Moreover, the Union will unveil a new Public Affairs Series and will continue to aid the very recently formed Chamber Orchestra. We shall prolong our efforts to seek maximum involvement in the planning and execution of Union programs and publications, at all times working closely with A.S.U.C.M.C. President Mel Matsushima and with the Office of the Dean of Students.

In a succinct message titled "The Health Sciences in Society," Chancellor John Saunders has this to say:

"We are in the midst of an authentic social revolution which subjects our changing, urbanized culture to stresses and strains of the greatest magnitude. The health sciences, in contributing to the search for the solutions of the problems engendered by these changes, must extend their horizons beyond the individual organism. We must contribute to and draw upon a broader knowledge of man in health — the whole man in his total environment."

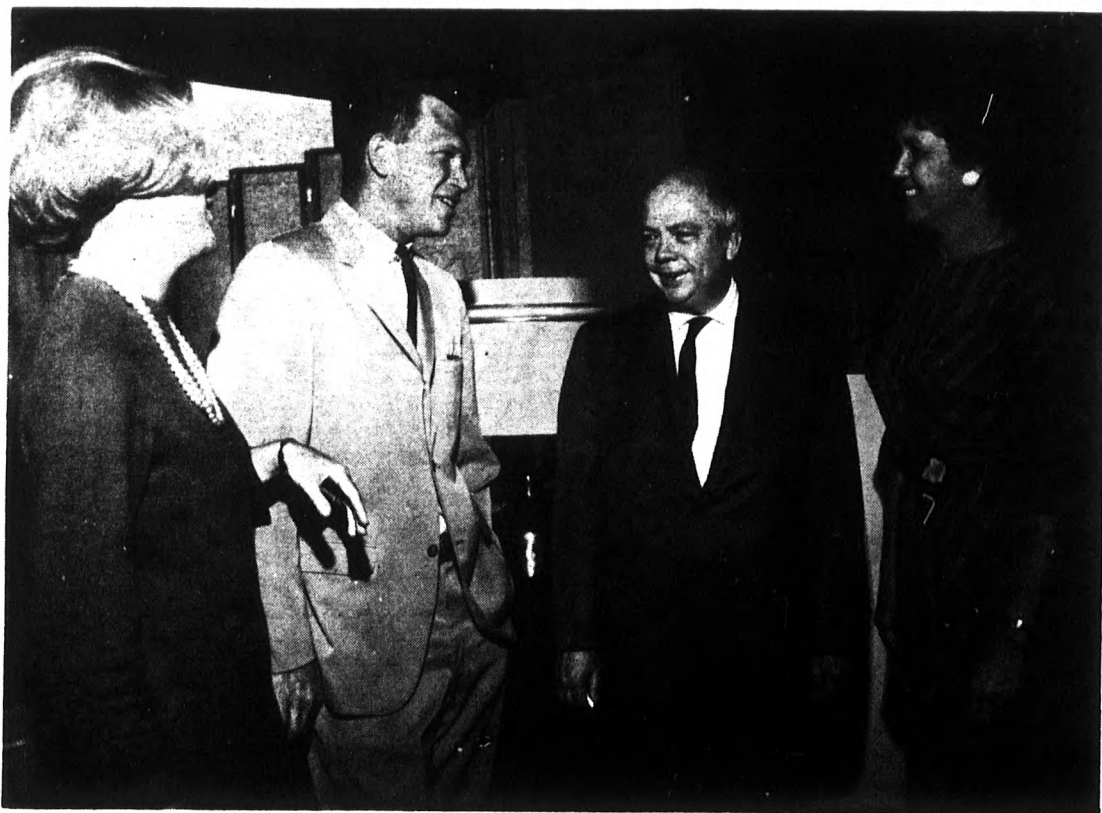
In the year before us, as in six prefatory years, the Millberry Union and its Board of Governors would again like to acknowledge this challenge and to do whatever it can to assist in meeting it.

Robert A. Alexander, Director

Guy S. Millberry Union

Dr. Frank M. Goyan --

## From the Office of Dean of Students



Officials of Student Administration "take five" before the official opening of the academic year to compare notes with Pat Prescott, Chairman of the ASUC Orientation Program. Left to right, they are: Miss Prescott; Robert A. Alexander, Director, Millberry Union; Acting Dean of Students Frank M. Goyan, and (new title) Assistant Dean of Students Virginia Gardner.

The Office of the Dean of Students of this campus is only twelve years old. Dr. Herbert G. Johnstone was our first Dean of Students while serving as professor of parasitology. Assistant Dean Virginia Gardner is the only member of the University Staff who has devoted her full time to this office since it was started. She has recently assumed the title of Foreign Student Adviser in addition to her new title of Assistant Dean of Students. Dr. Victor Rodwell relinquished both titles in order to devote full-time to his academic duties. Dr. William Ware formerly held the title of Dean of Students but resigned because of his many duties in the School of Dentistry. He now holds the title of Acting Assistant Dean of Students and shares the responsibilities of Acting Dean of Students, Frank M. Goyan, who is a member of the faculty of the School of Pharmacy.

It must not be assumed from this brief history that the Office of the Dean of Students on the San Francisco campus is not firmly established in its many functions. Except for matters pertaining to student discipline, which are left in the hands of the Deans of the several professional schools, students may expect to find all the services available on the larger campuses of the University. Health insurance, loans, scholarships, student counseling, assistance with visas for foreign students, assistance in various student functions, and many other activities occupy our small staff. Recreation is in

the hands of Mr. Norvel (Bud) Alexander, our recreation supervisor, (Room 243 Millberry) with the exception of the distribution of free ushering tickets to various important plays, operas, concerts, etc. These may be obtained at the Office of the Dean of Students (U-60) which can be reached by entering the UC Hospital Building from street level on Parnassus Ave., opposite 3rd Ave. All students are welcome to come to this office at any time (Hours 8-5, M through F).

The Acting Dean invites informal conferences with students at any place and time and on any subject without prior appointment. However, his office staff will gladly arrange an appointment to suit any student's needs. Office phone Ext. 2275.

### The Voice of Experience

## Freshmen Dental Students Read, Take Heed

By Bruce Orsborn

A bit of an introduction to the courses you'll be taking this semester will eliminate confusion and help you get a good start.

### Anatomy 115-A

Grant's Atlas and Gray's Anatomy were the supplementary texts most often used. You'll get them sooner or later; get them now and you'll get full benefit from them. You'll be lost the first day in lab, but by the second day you should know what you are looking for, get to work and find it. When you find a structure clean it well, use your books and your head to identify it. Then you can ask an instructor for verification. You can expect a couple of quizzes in the lecture.

### Anatomy 116

This course is Histology. You'll do microscopic examinations of the various tissues of the body and look for particular structures found in the tissues. Find a picture of the structure you're looking for in

the text book, find out what tissue it is likely to be found in, put a slide of that tissue under the microscope and start looking. Ask questions and listen to what the instructor has to say.

### Dental Materials 115

Expend some effort to organize the material you get from lecture and from the book and you can get a lot from this class. Learn the material now and you won't have to learn it again later. In lab if you learn to mix plaster correctly during the first week you'll have accomplished something — mix it stiff and dense for the test cases. Do everything as neatly as possible.

### Dental Morphology 110

You'll sculpture teeth in green wax. Learn to do the block out quickly and correctly so you can spend more time on the detail work. Don't do a lot of carving on one aspect of the tooth before you know how the other aspects are being effected. Learn to repro-

duce the most minute curves and details of the tooth accurately. There'll be a quiz every week in lecture.

### Denture Prosthesis 110-A & 113-A

The first exercise in this course will be to take an impression of a zinc die and pour a plaster model in the impression. Then you'll make an impression tray, denture baseplates, mount models on your articulator and start setting teeth. There will be a test case on every exercise and a quiz every week in lecture.

### Orthodontics 110

This course describes the growth of the head and the methods of measuring this growth.

One last point: The only way to get anything done at this school is to get to work and do it. You wouldn't be here if you weren't capable. The work must be done sooner or later — you might as well do it sooner. Expect to make mistakes, but learn to make them fast so you'll have time to repeat if necessary.



# Chancellor, Student Leaders Plan Orientation



L. to r., Pat Prescott, Mel Matsushima, Chancellor Saunders.



The Chancellor with ASUC Prexy Mel Matsushima.

## ASUC'S Frosh Dance Friday to Cap Program

(Continued from Page 1)

p.m., the California Club will hold its formal Orientation Program, introducing the Administrative Officers of the San Francisco Campus and Student Body presidents who will all have a word of welcome. The administrative officers are Dr. John B. de C. M. Saunders, Chancellor; Willard C. Fleming, D.D.S., Vice-Chancellor and Dean of the School of Dentistry; William O. Reinhardt, M.D., Dean of the School of Medicine; Helen E. Nahm, Ph.D., Dean of the School of Nursing; Troy C. Daniels, Ph.D., Dean of the School of Pharmacy; Harold A. Harper, Ph.D., Dean of the Graduate Division; Frank M. Goyan, Ph.D., Acting Dean of Students; and Robert A. Alexander, Director of the Guy S. Millberry Union. Student Body Presidents are Melvyn Matsushima, President, ASUCMC; Gary Steyaert, School of Dentistry; Anthony Sebastian, Medicine; Patricia Prescott, Nursing; Thomas Piepmeyer, Pharmacy; and Dr. Ernest Newbrun, Graduate Student Association. The program will be held at the Medical Sciences Auditorium and Louise McFarlane will act as Emcee

for Robert A. Shain, President of the Cal Club, who is out of the state.

Immediately following the Cal Club program, the Chancellor's reception will be held in the Steninger Gymnasium, Millberry Union, from 3:30 to 5 p.m.

This reception is designed to allow the Chancellor and the Administrative Officials to personally meet the incoming students. Mrs. Dorothy Norris, Administrative Assistant to Chancellor Saunders, stressed the informality of the occasion and suggested that campus casual wear was perfectly acceptable. She also informed THE SYNAPSE that President and Mrs. Clark Kerr may or may not be present in the receiving line, pending further inter-campus commitments. However, Chancellor and Mrs. Saunders will definitely be present, as well as Vice Chancellor and Mrs. Willard C. Fleming, Dean and Mrs. Troy C. Daniels, Dean and Mrs. William O. Reinhardt, Dean Helen Nahm, and Dean Harold Harper. Dean Frank Goyan will relinquish his place in the receiving line to be the Official Greeter, and will also act as Master of Ceremonies for the gathering.

The reception will be held for all entering students and will offer punch, coffee, and cookies as refreshment. The California Club and the ASUCMC will join in the reception as student mixers, and to aid in identification, there will be color-coded badges for all participating students: Blue, Nursing; Red, Medicine; Gold, Pharmacy; and Lavender, Dentistry; and white, campus officers and officials.

### FRESHMAN DANCE

After the close of this series of meetings, the new students will get a taste of campus hospitality and social life at the ASUC Orientation Dance to be held Friday evening in Steninger Gymnasium at 9 p.m. Admission is free.



Members of the ASUC Council: Gary Steyaert, Dr. Ernest Newbrun, Tom Piepmeyer, Pat Prescott, Tony Sebastian, Mel Matsushima, Rich Avanzino.

### Season Tickets For SF Symphony On Sale At Central Desk

Ronald J. Stoney, M.D., Symphony Forum Representative from the Medical Center, reported that two hundred seventy five season tickets for the 1964-65 Symphony Season will be available to Medical Center students. Tickets will go on sale (on a first come, first served basis) at 7:30 a.m. on Monday, September 28, 1964 at the Central Desk of the Millberry Union. Closing date for ticket sales will be Friday, October 16.

Season ticket prices are as follows:

Orchestra \$31.50; Grand Tier \$31.50; Dress Circle \$31.50; Balcony Circle and Balcony \$24.00. Orchestra (first three rows center and first four rows on sides) \$19.00; Balcony (sides) \$19.00.

Concert programs and soloists' listings are available at the Central Desk.

## Medical Student Wives To Greet Newcomers

The Medical Student Wives Club of the U. C. Medical Center will hold its annual Welcoming Tea and first meeting of the year on Saturday, September 26 in the Faculty Lounge of Millberry Union. Events will begin at 1:00 p.m.—with a tour for new student wives—of medical school facilities during which they will be met and welcomed by Dean of the Medical School, Dr. Wm. O. Reinhardt. The tea will begin at 2 p.m. Chairman of the Welcoming Tea is Mrs. D. E. Snider.

New officers of MSW, elected at a meeting held in the home of Dr. and Mrs. Reynold F. Brown, are Mrs. Lawrence W. Jones, President and Mmes. E. H. Epstein, Vice-

President; Lyle J. Strand, Recording Secretary; Robert L. Roe, Corresponding Secretary; and John A. Jones, Treasurer.

MSW, having disbanded its individual first, second, third and fourth year class groups, has united into a general membership to ensure maximum participation in all functions. Events for the coming year will feature a series of speakers from fields of education, politics, business and other professions, a dinner-dance, volunteer services at Moffitt Hospital in December, the annual spring fashion show, and many other events scheduled for discussion at the first meeting.

## ASUC Welcome Dance

Everyone Invited

9 - 1

Student Cafeteria

Casual Wear

Admission Free

with Reg. Card



# Arts and Entertainment



Art Grant in a Moment of Truth

## Sculpture, Painting -- Folk Guitar Classes Begin Oct. 6

Two new Millberry programs — a beginning art course and a class in folk guitar — will begin on Tuesday, October 6, and Thursday, Oct. 8, in the Student Cafeteria and Music Room, respectively.

Art Grant's class in junk sculpture and beginning painting will have its first session of the eight weeks' class on Tuesday, Oct. 6, in the Student Cafeteria. Tuition for the class is \$8.00 for Union members and guests; \$10.00 for non-members.

The fee includes basic equipment and supplies. Students would be asked to provide a small kit of materials, including Conte crayons, a felt pen, colored crayons, a brush, and a painting knife. Sign-up forms are available at the Central Desk, Millberry, and further information may be

found at the Union Program Department, Room 241, Ext. 789.

### Guitar Course

Beginning instruction in folk guitar, also an eight weeks' semester course, will be given by well-known local musician Glen Carlson beginning Thursday, October 8, in the Music Room. Mr. Carlson will provide sheet music and instructional materials, and has arranged for guitar rentals for those who do not have their own instruments. Fee for the course is \$8 for Union members and guests, \$10 for non-members. Additional information may be obtained at the Central Desk, Millberry, or the Union Program Department.

Union members and those who signed the "interest forms" during last spring's "May Fair" will be given pri-

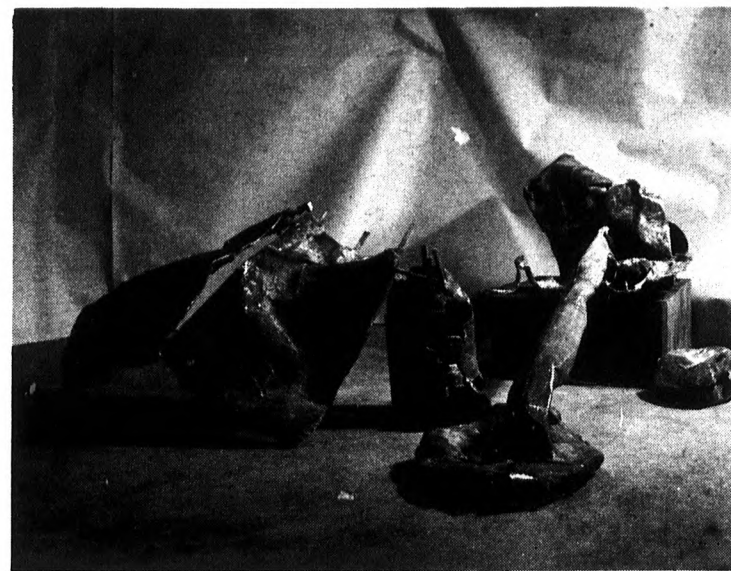
## Establishment, Individualism To Alternate

Faculty artists of the University of California, Berkeley and Davis campuses, will be on exhibit at Millberry Union through October 14 in a show entitled 'Sculpture and Graphic Art by U.C. Artists.'

The exhibition was collected originally by Director Herschel Chipp, Director of the University Art Gallery, Berkeley, and the Committee for Arts and Lectures, for display last month in Berkeley.

Brochures, with comprehensive notes and catalogues of the exhibition, are available.

Next month's major exhibit will be a member of the "anti-establishment" and one of its most volatile spokesmen —



"Blue Hour" Harold Paris . . . bronze

Jean Varda. Varda's collages and mosaics will be on display from October 15 through November 6 under the exhibit title, "The Great Individualists—No. 1." Further informa-

tion about M. Varda is forthcoming in the next issue of THE SYNAPSE.

An exhibition of prints by the great German artist Emil Nolde will run concurrently with M. Varda's work.

In November, a display of modern Mexican folk art, from the Lowie Museum of Anthropology, in Berkeley, and an exhibition of prints by the Mexican "Artist of the people" Jose Guadalupe Posada, will occupy Millberry's major galleries.

## Union Film Series

All films will be shown at 7:30 p.m. in the Medical Sciences Auditorium except for certain special programs which will take place at Millberry Union. Admission is 40 cents, children free.

On Friday, October 2, the Ingmar Bergman film, "A Lesson in Love," together with a Truffaut short film "The Mischief Makers," will be shown at Millberry Union.

The Medical Students' Wives Club will provide coffee and pastries (for a small concession) and will continue to offer refreshment to film-goers throughout the series. Proceeds of the sales will be given to the Club's several charitable projects.

September 25: "David and Lisa," "Unicorn in the Garden," Med. Sci. Aud.

October 2: "A Lesson in Love," "The Mischief Makers"—Millberry Union.

October 9: "Man on a Tightrope," Three Chaplin shorts: "One A.M.," "The Count," and "The Cure," Med. Sci. Aud.

October 16: TWO CHEKHOV STORIES — "The Lady With The Dog," "Anyuta," Med. Sci. Aud.

October 23: "The Notorious Landlady," "Two Tars" (Laurel and Hardy) Med. Sci. Aud.

October 30: HALLOWEEN—"Curse of the Cat People," "La Chute de Maison Usher" (Jean Epstein—silent) Med. Sci. Aud.

Complete film notes and reviews will be available in THE SYNAPSE. The regular film brochure will be issued shortly.

## Records Review

By DR. MARTIN BLINDER

Oscar Peterson: "NIGHT TRAIN."

(Ed. Note: Millberry Union recently added nearly seventy new records to its collection, through the generosity of the Alice Myers fund which originally endowed the Music Room. Dr. Martin Blinder, a resident in psychiatry at Langley Porter and a great jazz musician, movie director, and chef, has consented to audit the new additions to the campus listening booth for THE SYNAPSE and forward his criticisms in this regular column.)

Night Train, Verve V68538  
Oscar Peterson, Pianist

There is no such thing as a bad Peterson record; some are just less incredible than others.

This is one of the least incredible I've heard.

It was inevitable that Mr. Peterson should start turning out relatively unexciting albums. Like George Shearing and Dave Brubeck before him, Mr. Peterson is presently

cashing in on his well-deserved position of the "number one jazz pianist," and, as did Mr. Shearing and Mr. Brubeck, he is turning out albums at a somewhat indiscriminantly prodigious rate. (And I find it personally disconcerting when, each time I ask him which of his albums he recommend I buy to study, the one he names always turns out to be the one just released.)

Mr. Peterson practices compulsively. There are perhaps three pianists in the world who share his virtually limitless technique. (Certainly, Snabel never did.) And perhaps, when such technical perfection overtakes the heretofore struggling jazz musician, there is nothing left for him to do but relax and collect his due.

This is not a criticism. It is about time musicians received financial reward proportionate to their talent. And it is far better to earn a living turning out low grade Peterson records than, say, high yield bombs.



## Chess-Ladder Tournament

A rated ladder Chess tournament to continue informally throughout the semester with occasional meetings, will begin next week at Millberry Union. Rip McClary, Ladder Tournament director for the Koltanowski Chess Club, and a Med Center Library employee, and Beth Coffelt, Union Program Coordinator and winner of the 1963 Sonoma Women's Trophy, will be the program rating director and advisor, respectively.

The competition will be friendly (hopefully) and designed for an informal enjoyment of chess, with the added incentive of an award at the end of the semester.

When a new member joins the program, the Rating Ladder Director ranks him arbitrarily. Unlike a regular tournament, ladder play is continuous and optional. There are no rounds at which all ladder players must be paired. The competitors play when they feel like it, or possibly on certain evenings set aside by themselves for ladder play.

Players who wish to sign up for the ladder tournament may do so by forking over a dollar at the Central Desk and entering their names on the ladder sign-up forms. Thereafter, when two ladder players wish to play a game, they may pick up a form at the desk, and sign and return it with the results of the game. Forms will be picked up and rated periodically by the Rating Director and the Ladder revised and posted at the Central Desk.



# Arts and Entertainment

## Film Review

### "David and Lisa" -- More Than the Usual

By William Brostoff and  
Myron Lee

"David and Lisa," the first film in the Union Film Series 1964-65, was adapted from psychiatric case studies of actual individuals in an private eastern psychiatric hospital. Time Magazine rated "David and Lisa" one of the best films of 1962; the film was also nominated for an Academy Award as the best film of the year. Critical acclaim was given the film because it tried to be something more than the usual slick Hollywood love story.

David (Keir Dullea) has an obsessive fear of being touched. Lisa (Janet Margolin), is a lovely schizophrenic, who communicates only in rhyme. In the pastoral setting of a private mental hospital in New England David and Lisa meet under the wing of the kindly staff psychiatrist. Here they move toward understanding of themselves through understanding of each other as their relationship forces the responsibility of love upon them, for this requires trust and acceptance.

However, despite the producer's effort to portray this relationship in a believable and sincere way, one is left with the feeling that one has

seen only a simple love story. This is the result of a tendency for the characters and situations to become stereotypes. For example, David is handsome and clean-cut, Lisa is charming and beautiful; the countryside is idyllic. The other patients are young, appealing and not too complicated. While attempting to show the public's general intolerance of the mentally ill, the scene in the railroad station is trite — or at least clumsy.

Symbolism is employed with an intent that is too obvious. For instance, there is Lisa's sudden drawing of her make-believe name and her real name within a circle in a moment of sudden insight.

And somehow one resists the feeling at the end of the film that love will conquer all.

However, the film is beautifully photographed, and the acting and direction are excellent and while the film may remain essentially a nicely told love story, this in itself establishes it as a touching and rewarding experience.

"David and Lisa" will be shown on Friday, September 25, at 7:30 p.m. in the Medical Sciences Auditorium. Admission is 40 cents, children free.

## 'Meridian West'

### Culture and Controversy Share Millberry Noon Series



Isa Mura and Ernesto of "Los Flamencos de la Bodega."

(ME-RID-I-AN (noun) 1: Noontime; midday; also, the highest or culminating point of anything; the zenith; as, the meridian of life.)

Flamenco, politics, poetry folk music, drama, protest and polemics—draw the San Francisco boundary around the best and the newest, and the circle becomes the "Meridian West" of the Millberry noon program series.

First, "Los Flamenco de la Bodega" (pictured above), the exciting quintet of dancers performing the traditional dance form of Andalusia, will open "Meridian West" on October 1 in the Millberry Lounge. The group is currently performing at the Spaghetti Factory.

#### THE VARDA COMETH

Some things are untranslatable in print—Jean Varda is one. A California legend, he is the bete noire of the "Establishment" in art, the friend and contemporary of Henry

Miller and Benny Bufano. Varda exists alone in the category of "The Great Individualists," a king in a country of half-grown human beings who paint in the chiaroscuro of black and white instead of the "celestial" colors of the universe around them. With his mythical fleet of ships, his metaphysical machines ("Machine for the Propagation of Synthetic Schizophrenia") and not least, his collages and mosaics—which will be on exhibit at Millberry in October and November—Varda luxuriates in the elegance that is life. His houseboat in Sausalito, accessible only by way of a creaky fun-house jetty designed "to discourage middle-aged obesities" is an environment, not a domicile.

If Varda were not so triumphantly human, (throw in a bushel of June-night, and there you are) he would be pinned to the wall with the rest of the modern icons. However, this is unlikely.

Anyway you can see for yourself on October 15, when Varda will materialize in Millberry Union for the second Meridian West program.

October 22 will bring something new to the campus—The Afro-American Folkloric Troupe, a dramatic and poetic group composed of three very personable young men and one charming and talented young lady, who are dedicated to the popularization of Negro folk material—prose, poetry, and music. Further issues of

THE SYNAPSE will bring more information about this dynamic quartet.

(The October 29 program, a debate on the controversial "Proposition 14" slated for the November ballot, is described in another section of this issue.)

Millberry's first poetry reading will take place on November 5, when Lew Welch will read his own poem "Wobbly Rock" and others of his contemporaries.

Yes, Jeannie Ball will be back—if she hasn't left for the St. Regis Roof or the Parisian Room by then—on November 19. For those of you who haven't had the pleasure, Miss Ball enjoys the most enthusiastic fan club on the campus, and manages to win still more aficionados of her unique song and guitar style each time she visits us. Her November appearance will be her fourth at the Medical Center.

Jack Aranson, director of the Gate Theater company in Sausalito (currently performing "Shadow of a Gunman") will bring his company in scenes from their production of the J. M. Synge play "Playboy of the Western World" on December 3.

The December 17 program will feature a surprise (and quite sensational) guest artist in a reading of Dylan Thomas' poetic reminiscence, "A Child's Christmas in Wales." Further programs will be announced later in the year.

### MILLBERRY UNION ART EXHIBITS FALL SEMESTER 1964

Sept. 17-Oct. 15

### SCULPTURE AND GRAPHIC ART BY U.C. ARTISTS

Presented by the Committee for Arts and Lectures  
University of California, Berkeley

### September-October Program Calendar

Friday, Sept. 25  
Union Film Series:  
"David and Lisa"  
"Unicorn in the Garden"  
7:30 Med. Sci. Aud.

Thursday, Oct. 1  
Meridian West: Noon  
"Los Flamencos"  
Millberry Lounge

Friday, Oct. 2  
Union Film Series:  
"Lesson in Love"  
"The Mischief Makers"  
7:30 Millberry Gym

## Welcome Freshmen



# Fall Intramural Program Scheduled

Printed schedules outlining the fall intramural sports activities for both men and women students are now available and may be picked up at the athletic control desk (pool area) of the Union building. While students have been away for the summer, the Recreation Department has worked feverishly to line up an extensive and well-rounded sports and recreation program. Many of this year's intramural events will come late in the winning individuals and teams being invited to participate in the all-university sports weekend to be held at the UCLA campus in the early spring. Additional information regarding the All-University Sports Weekend will be forthcoming in later issues of The SYNAPSE. Included in these activities, and for the benefit of those who are ready to get started early, the following dates and deadlines are listed covering the following events scheduled to start during the month of Sept. Team entry and roster forms may be obtained at the Athletic Control Desk of the Union building.

## MEN'S BASKETBALL

A. Independent League — for school, class, faculty or employee teams

Entry Deadline: Friday, September 25

Entry Fee: \$2.50 per team  
Play to Start: Tuesday, September 29

All games will be played on Tuesday nights between 7 and 10 p.m.

B. Fraternity League—for fraternity and special student organizations only

Entry Deadline: Friday, Sept. 25

Entry Fee: \$2.50 per team  
Play to Start: Thursday, October 1

All games will be played on Thursday nights between 7 and 10 p.m.

## WOMEN'S BASKETBALL

Entry Deadline: Thursday, October 1

Entry Fee: \$2.50 per team  
Play to Start: Monday, October 5

All games are scheduled to be played on Monday nights between 7 and 9 p.m.



## Swimming Hours

Fall 1964 Hours of Operation — Athletic and Swimming Pool Facilities

Monday-Friday—10 a.m.-10 p.m.

Saturday—9 a.m.-6 p.m.

Sunday—1 p.m.-6 p.m.

### CLOSED HOLIDAYS

Note: Pool and gym are reserved on Monday and Friday mornings from 10-11 a.m. for Langley Porter Neuropsychiatric Institute Patient Recreation. The swimming pool is reserved on Saturday mornings from 9-11 a.m. for children's swim classes and on Tuesday and Thursday evenings from 8-10 p.m. for scuba diving course. Facilities are available for recreational use all other hours as scheduled.

## Friday Sports Films

The Union Recreation Department is happy to announce a continuation of its weekly noon-time sports film program. An exciting series of sports films has been arranged for the fall semester. The first of the series will begin on Friday, Sept. 25 with a showing of the Cal Missouri Football Game Film. Watch for the special spot announcement notices. If you haven't something better to do at noontime on Fridays, may we suggest checking in on some of the special sports films.

# Greetings from the Union

The Union Recreation Department takes this opportunity to extend a warm "welcome back" to all returning students and a special "glad to have you" to all new students. The Union's compact athletic and recreational facilities offer an excellent opportunity for students to relax and enjoy themselves while relieving themselves of the academic strain. A wise educator once said "when the mind is tired, exercise the body." We accept this as good advice and encourage our students and faculty to make good use of the facilities that are provided for them. The Union athletic facilities include a fully-equipped multipurpose gymnasium, outfitted with a complete line of gymnastic apparatus including a

jumbo gym-master trampoline. Other facilities available include a well-equipped exercise room, two official-sized squash and handball courts, and a very excellent 20-yard A.A.U. sized heated swimming pool. Basketball, volleyball and badminton can be enjoyed in the gymnasium while an adjacent games area provides for table tennis, billiards and other table games. Equipment for use in the gymnasium and other athletic facilities can be checked out at the Athletic Control Desk and for those desiring use of the games area the equipment may be obtained at the Central Desk in the lounge area. A variety of intramural athletics, aquatics, and excursion type activities has been planned for your leisure time and enjoyment. We encourage

our Union members to visit the Union often—make it your campus center. It is your Union. We hope that you would use it well. Also we would hope that your enjoyment in participating in using the Union facilities will be as great as ours will be in serving you. The Union will afford you the opportunity to make many new friends. Members of the Recreation Department staff are always ready to be of service and to give whatever assistance may be needed. The door to the Office of the Recreation Supervisor is always open and we encourage our Union members to drop in at any time to ask for information or to request whatever assistance may be needed. We will be delighted to give you our time.

## September-October Excursion Calendar

Saturday, September 26 — Deep Sea Fishing at Gardners, Half Moon Bay

October 9, 10, 11—Camping at Yosemite

Friday, October 16 — Bay Cruise and Dinner Party

Saturday, October 17—Bike Hike

October 23, 24, 25—Reno Fun Holiday

Saturday, October 31—Mystery Trip

## Swim Classes Begin in September

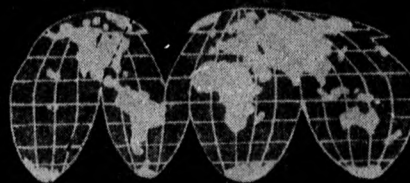
The Union Recreation Department will again offer an extensive swimming instruction program for both children and adults during the fall semester. Sign-ups are now being accepted at the swimming pool. A complete brochure is now available at the swimming pool desk. Children's classes will begin on Saturday, September 26. Adult classes will begin on Monday, September 28. Children's classes will consist of a series of ten ½-hour lessons running con-

currently on Saturday mornings throughout the fall semester between the hours of 9 a.m. and 11 a.m. Adult classes are scheduled for Monday and Wednesday evenings between the hours of 7 and 8:30 p.m. Special tiny tot classes for pre-school youngsters are also scheduled. For additional information contact the Union Recreation Department, Rm. 243, Millberry Union, MO 4-3600, Ext. 723.

## Rental Lockers Now Available

As a matter of information to all new and returning students and faculty, rental gym lockers are now available. A small locker and combination lock may be rented on either a one- or two-semester basis or for the entire year. Rental fees are collected at the time locker is issued. Rates are 50 cents per semester, 25 cents per a summer period. Lockers may be checked out at the Athletic Control Desk and are issued on a first-come, first-served basis.

## noon topics



The Noon Topics Lecture Series, sponsored by the Committee for Arts and Lectures, is conducted on Wednesday noons in the Medical Sciences Auditorium. The series, covering a broad range of topics under the general category of "Human Ecology," will be announced in this column in each edition of THE SYNAPSE.

SEPTEMBER 23: "In Pursuit of the Insect," Dr. Edward Ross, Curator, Department of Entomology, California Academy of Sciences.

SEPTEMBER 30: "Diving Saucers in a Submarine Canyon," Dr. Francis P. Shepard, Professor of Submarine Geology, Scripps Institute of Oceanography.

OCTOBER 7: "The Life of Stars," Dr. George H. Herbig, Astronomer and Assistant Director, Lick Observatory.

## Smith & Falkenstein

## STADIUM GARAGE

522 Frederick Street

San Francisco 17

Phone OVERland 1-5800

## Automotive Repairs & Service

ALL MAKES & MODELS

A.A.A. ROAD SERVICE

# Welcome Freshmen

## Bowling League

A mixed league is scheduled to begin on Monday, September 28 at the Park Bowl, located at Haight and Stanyan Streets, 6 blocks from the Medical Center. The Union has reserved 8 lanes for this purpose. The time is 6:30-8:30 p.m. Monday nights only. The league will consist of 8 5-man mixed teams and is handled on a handicap basis. Team sign-ups are now being accepted by the Recreation Supervisor, Room 243, Millberry Union. Additional information regarding other intramural events will be forthcoming in future issues of the Synapse. Watch for these articles on the Sports and Recreation Page. Don't forget printed schedules listing the entire intramural program for the fall and spring semesters are available at the Athletic Control Desk.

## TEHERAN CAFE

1736 Haight EV 6-9975

Persian-American Food

Shish-ka-bob

90c &

1.25 - 2.25

Steak Dinner

1.95

## TOWER - TV

TV, Hi-Fi, Stereo & Radio

Sales and Service

MOntrose 1-1350

729 Portola Drive,

San Francisco



# Recreation Department

## Directions for Using Union Athletic and Games Facilities

For the benefit of those new to the campus who have never had the opportunity to use the Union athletic facilities, the following directions are given to help you become more acquainted with the facilities and procedures regarding their use. Members desiring to use the games facilities located in the Main Lounge area of the Union (this includes table tennis, billiards, bridge, chess and other table games) may check out equipment at the Central Desk located in the main lobby by depositing their Union membership cards. Children are not permitted to use these areas at any time, however members may host guests for use of these facilities providing they are accompanied by the member. A fee is charged for use of the billiard tables. All other equipment is checked out free. For those desiring to use the athletic facilities, to play basketball, swim, exercise, or play a game of squash or handball, check in at the athletic control desk (pool area) deposit your Union membership card, at which time you will receive a towel. When the towel is returned after your use of the facilities, your membership card will be returned. It is important to remember that the membership card should be picked up each time after the facility is used as the checking in of the cards serves as a control measure in the issuance of towels. A rental locker system is also available to all Union members. Union members may host immediate family members and other guests for use of the facilities on a pay-as-you-go basis—35 cents per visit, providing the guests are accompanied by the member. Also, special identification cards may be obtained by spouse for identification so that they may use the facilities without the member having to accompany them. For additional information in this regard, Union members are requested to contact the Union Recreation Department, Rm. 243, Millberry Union.

## Recreational Activities Schedule

Men's Intramurals — Tuesday and Thursday nights 7-10 p.m., Steninger Gym

Women's Intramurals—Monday nights, 7-9 p.m., Steninger Gym

Employee Swim Schedule—Monday and Friday 3 p.m.-10 p.m., Millberry Pool

Spouse Swim Night — Wednesday nights, 5-8 p.m., Millberry Pool — no guest fee charged for spouse of Union members.

Family Swim Time — Sundays, 2-4 p.m., Millberry Pool  
Bowling League — Monday nights, 6:30-8:30 p.m., Park Bowl



## Meet Your Recreation Supervisor

Each year with the influx of a large number of new students, it has become common practice to make introductions of key staff persons operating the various programs and facilities of the Millberry Union. One of these persons is Norvel E. "Bud" Alexander, who serves as the Union Recreation Supervisor and is responsible for the operation of the athletic wing, the intramural sports program, aquatics, excursions and a variety of other recreational activities. A close relationship exists between the office of the Recreation Supervisor and the individual Union members. Members are encouraged to drop into the Recreation Supervisor's office for individual introductions and to discover the various services of the Recreation Department. As a matter of background information, and especially for the benefit of all our new students, we should like to give this brief introduction of Bud Alexander. Bud is a 1958 graduate in Physical Education from San Francisco State College, has been with the S.F. Medical Center campus for the past 6 years, coming to his present position immediately after graduation. Prior to this time he worked for 3 years as a full-time Recreation Director for the Oakland Recreation Department. Bud assisted in the initial opening of the Mill-

berry Union and is responsible for equipping and putting into operation the recreation and athletic wing facilities. He is presently responsible for the intramural athletic program, aquatics, excursions and other special programs of this nature. He has served for the last 4 years as Regional Recreation Advisor for the Association of College Unions and as Secretary-Treasurer for the Northern California A.A.U. Basketball League. In addition to his many duties at the Millberry Union, Bud keeps busy in church and community activities. He is an active member of the San Francisco Bay Area Council of the Boy Scouts of America, serving as a chairman of the organization and extension committee of the Lake Merced District. He is an active member of the California Association for Physical Education, Health and Recreation. He also serves as a member of the Board of Directors of the Liahona Club—a private club for business and professional men which operates a summer camp for young girls. Bud resides in the Sunset District with his wife Jolayne and two children, a son Kurt 7, and a daughter Lorie, 2½. Bud states that his office door is always open. Anytime he can be of assistance in answering questions or giving help in any way, he will gladly give of his time.

## Missing Your Gym Locker?

A note to those who may have forgotten to clear or renew their gym locker at the end of the spring or summer semesters—deadlines have long since passed. (This notice concerns only those who failed to clear or renew their lockers properly). Lockers that were not cleared or renewed by the deadline dates have been emptied by the Millberry Union Recreation staff. Equipment left in the lockers may be called for and will be held for three weeks. After this time all equipment not called for will be disposed of. At the same time it should be noted that those returning from the summer period who have not cleared or renewed their lockers may do so up until Friday, September 25. Lockers have not been cleared for the summer period even though the deadline was August 17. Lockers will not be cleared until after September 25.

## Cal Athletic Privilege Cards Now Available

The 1964-65 Cal Athletic Privilege Cards are now on sale at the Central Desk of the Union. Two types of cards are available. 1) Student Card — this card is sold at an annual fee of \$2.00 to any student enrolled in the University. The card entitles the student to either free or reduced rate admission to all Cal football and other athletic events. It also entitles the student to purchase an additional spouse card for each event at the normal specified spouse rate which is usually ½ of the reserved seat price.

2) The Associate Card—for faculty and employees of the University. This card is sold at \$8.00. One additional card may be purchased at the time for the member's spouse. The Associate athletic card entitles the bearer to the purchase of two football season tickets or two individual home tickets at one-half the regular reserved seat selling price. The Union also handles the distribution of athletic game tickets for all Cal athletic events through the Central Desk, located in the lobby of the Union building.

## Spouse Athletic Privilege Cards

Union members are reminded that two types of spouse athletic privilege cards are available — one, a regular spouse card, issued at no fee, and which may be used to identify the spouse for use of the Union athletic facilities on a pay-as-you-go basis, 35 cents per visit. Any married member of the Union is eligible to pick up one of these cards for his spouse by showing his own membership card at the Central Desk of the Union building. This card permits the spouse to use the facilities without the member being present. It also permits the spouse free use of the Union athletic facilities on Wednesday nights "Spouse Night" from 5-10 p.m. The second card, and the more popular of the two, is the "Spouse Athletic Privilege Card" which is issued at an annual fee of \$6.00 and permits the spouse to use the Union athletic facilities without being accompanied by the member on as many occasions as they desire, at no charge. Each of these cards may be obtained at the Central Desk in the main lobby of the Union building. Spouse cards are non-transferable. New cards are required each year.

## Scuba Course to Begin September 29

Union members are again being notified that the special skin and scuba diving course entitled "Introduction to Underwater Education" will be conducted during the fall semester by the Union Recreation Department. This is a basic course of instruction and certification in skin and scuba diving. The course is designed to meet University-wide diving and safety regulations as prescribed by the University's office of Environmental Health and Safety. The course will consist of 16 sessions, approximately 40 hours of instruction plus 4 planned ocean dives. Class meetings will be held on Tuesday and Thursday evenings from 7-10 p.m. Sign-ups will be taken on a first-come, first-served basis and only a limited number will be permitted. Those interested in taking this course are requested to contact the Recreation Supervisor regarding requirements, rates, equipment, etc. The course will begin on Tuesday, September 29.

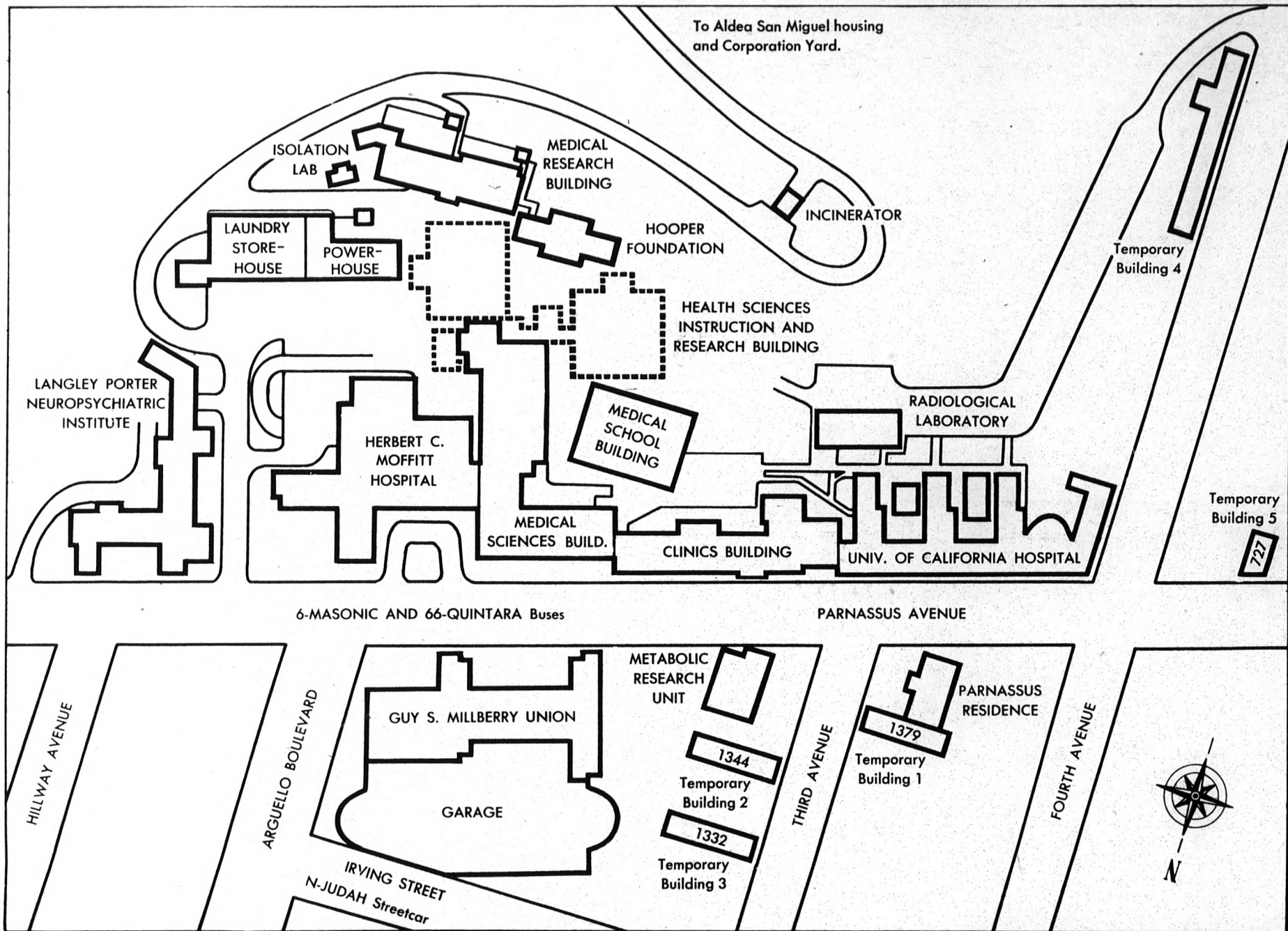


## Films for Little Bears

Ten (10) top films especially selected for children are scheduled on the Saturday film calendar "Films for Little Bears" for both the fall and spring semesters. The complete printed schedule will soon be available and may be picked up at the Millberry Union Central Desk. These programs will include several well-known and loved children's classics. The film series for the fall semester will begin on Saturday, September 26 and will run concurrently throughout the semester on every Saturday morning following the children's swim instruction classes. Each of the main features will be accompanied by a cartoon. For a special treat for the children, try the "Films for Little Bears."



# Here, There, and Everywhere



## New Manager Named for Public Info.

A letter from Louis Bell, Public Information officer on the San Francisco Campus for the past eight years, has announced his departure from campus activities to be a member of the "free-lance working press" and to enroll at Hastings College of Law.

Mr. Bell states that his replacement is a former Cardiovascular Research Institute personality, Mrs. Mary Loeb. Mrs. Loeb served with the CVRI as business officer from 1958 to 1961, and has an excellent and varied background in public relations, writing, and administration.

Mrs. Susie Grantier will continue as secretary in the department.

### GINET-MILO STUDIO

Weddings  
Internship Photos  
Identification Photos

637 Irving Street

## CLASSIFIED

As a "surprise bonus" to introduce its new Classified Section, THE SYNAPSE herewith prints — free for nothing — a sampling from the campus bulletin boards. Further classified rates are available through Ext. 789.

**USED DENTAL EQUIPMENT** for sale. Joe Grisson. PI 6-6189.

**EXTERNSHIPS AVAILABLE** at St. Mary's Hospital. Contact Dr. Davis or Dr. DeBerry, SK 2-4000.

**FRENCH LESSONS** — Young lady will teach private French lessons. For information call UN 1-3674.

**DENTAL EQUIPMENT** — Freshman, for sale! Bargain deals. Ron Snell, 355-4389.

**COMMUTERS**—Rider to share expenses daily in car trip from Petaluma, Novato, or San Rafael to Medical Center. Five days a week. Leave Petaluma 7 a.m., leaving Med. Center 5-6 p.m. Dr. Lewis, Ext. 2291.

**OXYGEN REGULATOR** and dual manifold for sale. Excellent condition. OV 1-4446.

**RED EASY CHAIR** for sale. Very comfortable, \$20. 664-8505.

**CHILD CARE** — A wife of a Medical student with a girl 3½ years old would like to take care of another girl of approximately same age. LO 6-0288.

**USED FRESHMAN EQUIPMENT** — ½ off. Vance Rockwood, 661-5481.

**WELCH - ALLYN OTO - OPHTHALMOSCOPE** for sale. David Whitenack, 332-1700.

**EKG FOR SALE**—Good condition. YU 6-5924.

**WEDDING GOWN** for sale—Worn once, freshly dry cleaned, peau de soie with long bell-shaped skirt. Long sleeves. Chapel train, \$80. MO 1-5724.

**SINGLE TWIN BED**, \$25. Danish modern sofa bed and matching lamp, \$75. Call Miss Davis, Ext. 2268 or MA 1-9728.

**AUTOS FOR SALE**

'63 MONZA, great condition, \$1,850. 931-3248.

'64 HONDA — \$200 and take over payments. SK 2-5691.

'61 SPRITE for sale. Call Ester Kamm, Ext. 726.

MG 1100 SEDAN—\$1900, will haggle. 848-9123.

GARRARD Auto. Slim "Mark II" changer with sure M3D cartridge and diamond stylus. All stereo, \$36. 2—8" speakers mounted on 12x12x24" walnut finished cabinets, \$20 each. Call OR 4-2028.

75 WATT FM STEREO multiplex receiver with stereo Bekon. Never used, \$330. JU 4-4133.

## Where to Buy It

**BOOK AND SUPPLY STORE**

Textbooks  
Pocketbooks  
Medical Supplies  
Dental Supplies  
Cosmetics  
Attache Cases  
Briefcases  
Stationery  
Social Stationery

**BEAR'S WARES**

Film Service  
Greeting Cards  
Wrapping Paper  
Gift Items  
Class Rings  
Cosmetics  
Pocketbooks  
Magazines

**SPECIAL SERVICES**

Repair Service on dental and medical equipment  
Repair service on fountain pens  
Plaques for diplomas  
Check cashing (students' and faculty members)  
Stamps  
Specil Book Orders

## FIFTH AVENUE FOOD MART

400 IRVING ST. S. F.  
Quick Service For Busy People

## Welcome Freshmen